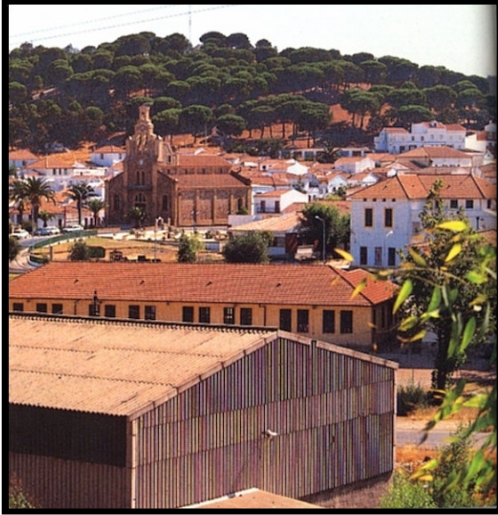


MINAS DE RÍOTINTO

The town Minas de Ríotinto, located in Huelva province, is named for the mines that have been the town's main industry for thousands of years. The copper and iron oxide residues give the river and surrounding areas a reddish tint.



Location: Minas de Ríotinto is located in the north east of Huelva Province, 68 km (42 miles) from Huelva capital.

Population: 4,500

Area: 24 km² (15 miles)

History: Legend has it that Minas de Ríotinto was founded by King Solomon thousands of years ago. The Phoenicians took control of the area around 1000 BC and extracted silver and iron ore on a large scale. The Romans filled the mines with slaves in the 4th century and extracted vast amounts of silver, at a huge human and environmental cost. In the 19th century the British mined copper, until in 1954 the Spanish regained

control of the mine. The Spanish mining companies continue to extract copper, although the principal mining site has changed.

Climate: The weather in Minas de Ríotinto is similar to that in most parts of Andalucía. The summers are very hot, but due to the town's elevation, the winters, although not long, can be quite cold.

Geography: The long history of the extractive mine industry has created a unique geography. While the green, rolling hills that dominate the northern part of Huelva are present in Minas de Ríotinto, the colored river and red-orange rocks distinguish this town from the rest of the province.

Local Industries: Mining, Tourism.

Famous Monuments: The mines are the principal attraction. The *Museo Minero* offers history and tours of the mines.



Local Highlights: Take the steam train (*Ferrocarril Turístico-Minero*) through 22 km of mining landscape, much of which looks like the moon or Mars.

Cultural Insight: The river was once called the "River of Fire" by the Romans.

More Information:

- <http://www.andalucia.com/province/huelva/riotinto/home.htm>
- http://es.wikipedia.org/wiki/Minas_de_Riotinto (Spanish)