



### program snapshot

- Choose from the largest selection of Chinese language electives in China at the prestigious Peking University; ideal for advanced and heritage language learners
- Improve your Mandarin through 20 hours of in-class language coursework per week and one-on-one tutorials with Peking University peer tutors
- Learn from CIEE Staff trained in Teaching Chinese as a Second Language
- Immerse in Chinese culture by visiting the Great Wall, Temple of Heaven, and an area outside Beijing such as Xi'an or Hangzhou
- Live with a Chinese family in a homestay

### what you'll learn

The Intensive Chinese Language program is designed to enable high-intermediate and advanced language students to increase their language proficiency and knowledge about China and Beijing's important role in Chinese society. This is achieved through intensive Mandarin training, weekly interactions with Chinese peer tutors and other local Chinese, a local family visit, and group excursions. This program is ideal for independent students looking to explore Beijing and its local culture outside of classes.

## thoughts from abroad

Beijing is a fascinating combination of modern development and ancient cultures. In the center of Beijing, the bustling commercial strip of Wangfujing is just half a mile away from the Forbidden City, the former home of the emperors for several hundred years. Living in Beijing, not only can you visit unique places such as Laoshe Tea House, the Summer Palace, and the Great Wall, but you can also find western flares such as the Hard Rock Cafe, Starbucks Coffee, a French bakery, and Häagen-Dazs ice cream. You can find every kind of world cuisine in Beijing.

The pace of development in Beijing is breathtaking. Every time I come back to the city, I feel that it has changed enormously, and even students who stay for just a few months notice changes. I sincerely invite you to be a part of the CIEE Beijing experience. I'm confident that it will change your life.

— Yuan Tian, Resident Director

### About the Resident Director

Dr. Yuan Tian holds a Ph.D. in Language Pedagogy from the University of Hawaii. Since 2002, she has served as the Resident Director of the CIEE Study Center at Peking University. Her experience with CIEE dates back to 1995 when she taught CIEE students at Peking University. Before assuming her position at CIEE, she served as the Assistant Field Director at an intensive Chinese program in Beijing and also taught Chinese at Columbia University.

### About Other CIEE Staff

Qiaoying Zhang holds a B.A. in Chinese Language and Literature and an M.A. in Teaching Chinese as a Second Language from Peking University. She has been working for CIEE since 2009. Before working at CIEE, she served as an instructor at the Columbia in Beijing program and the International College for Chinese Language Studies at Peking University.

Lin Liu holds an M.A. in Education Curriculum and Teaching Methodology from Beijing Language and Culture University. She has been working with CIEE at Peking University in Beijing since 2007. Before joining CIEE, she served as an instructor at the Harvard Beijing Academy.

## about beijing

As the capital of the world's most populous nation, Beijing is at the center of much that happens in China. It is a city of over 22 million people adapting as China emerges as a global player. Beijing reflects China's long and evolving history and home to some of the nation's most well-known and culturally important sites such as the Great Wall, Forbidden City, and the Summer Palace. In addition to being the political and cultural center of China, Beijing is known as the birthplace of Chinese cinema and modern art. Beijing also has China's largest concentration of top research institutions.

## academics

### Academic Program

The CIEE Study Center at Peking University (PKU) was founded in 1980, soon after the normalization of U.S.-China relations. The Intensive Chinese Language program offers students an opportunity to improve their fluency in spoken and written Mandarin Chinese through intensive language training. Students may also elect to take one course in English to supplement their understanding of China. Electives in English are offered in the areas of culture, business, and politics.

### Peer Language Tutor Program

The CIEE Peer Language Tutor program is a unique hallmark of the program and ensures that students' linguistic and cultural fluency progresses throughout their stay. CIEE students are paired with PKU students for weekly one-on-one Chinese language tutorials for a total of three hours per week, with more hours available upon request. These tutorials provide students extra conversation practice in Mandarin and guidance with homework assignments, while giving students an opportunity to befriend and be a part of the lives of their Chinese peers. Past students have stated that their peer tutors were one of the best and most unique aspects of the CIEE program. In addition to the tutors, students may also be paired with a local Chinese "buddy" who helps the student adapt to and understand student life.

### CIEE Chinese Language Advisory Board

The CIEE Chinese Language Advisory Board (CCLAB), made up of specialists in the learning and teaching of Chinese, serves to promote the highest standards of education at the CIEE Study Centers in Greater China. Specifically, the Board advises CIEE administrators and offers guidance to CIEE teachers on curriculum issues such as goals and objectives, instructional innovations, assessment, and progress and program evaluation.

Additionally, the Board offers its expertise on ways to integrate language courses into area studies curricula, encouraging the use of Chinese in area studies courses. Through close communication with both CIEE staff and members of U.S. sending institutions, the Board plays a pivotal role in providing course articulation for the CIEE Study Centers in Mainland China and Taiwan.

### Academic Culture

Students attend language classes from Monday through Friday for a total of 20 hours a week. Individual schedules vary depending on course levels. Typical classroom size for core language classes varies from 10 to 20 students. Elective classes typically have 20 to 40 students, depending on the topic.

Please note that a student's class level does not necessarily correspond with the years the student has spent learning Chinese. Broad language levels at PKU consist of multiple sub-levels to allow students with similar language proficiency to be grouped together in one class. Typically, several sub-levels exist for each broad language level. Therefore, course syllabi and content vary from course to course within each level at PKU's International College for Chinese Language Studies.

The CIEE semester program ends in accordance with the typical U.S. academic calendar as early exams are arranged for CIEE students. However, the language classes at PKU continue for one month past the end date of the CIEE program. Depending on the date of the Lunar New Year, there is approximately a two-month break between the end of the fall semester and the start of the spring semester, during which academic year students may travel around China and other parts of Asia. Other than these occasions, students should limit travel to nearby destinations on weekends or reserve more extensive travel until after the program has ended.

### Nature of Classes

Participants take Mandarin classes with CIEE and other international students and are not enrolled alongside Chinese students. CIEE electives are with CIEE students only.

### CIEE Community Language Commitment

Students take part in the CIEE Community Language Commitment by speaking Chinese at all times (except in emergencies). This fosters a learning community that contributes to both Chinese language proficiency and understanding of Chinese society.

### Grading System

Grades are determined by two monthly exams (80 percent), homework and quizzes (10 percent), and attendance and participation (10 percent). Letter grades of A, B, C, D, and F are given with pluses and minuses, as well as number grades.

## where you'll study

As one of China's most prestigious universities, Peking University was founded in 1898 and has a long tradition of scholarly excellence and political activism. Its primary mission is to train scholars for advanced research in the natural and social sciences. More than 30,000 undergraduate and graduate students are enrolled. The PKU campus comprises a blend of modern buildings and traditional Chinese architectural structures, and is celebrated for its beautifully landscaped grounds and lake.

## living

### Housing and Meals

Housing is included in the program fee. Students live in either the Foreign Student Complex (Shaoyuan) at PKU, in an off-campus facility located within a 15-minute walk from the South West Gate, or with a host family. Due to limited space, students are placed at the off-campus facility only after all rooms in the on-campus dormitory have been filled. Students may not live in private accommodations that are not arranged by CIEE. Students on the semester program living in the on-campus dormitories or off-campus housing have the opportunity to take part in a three week homestay experience.

Living conditions in both the on-campus and off-campus housing facilities are comfortable, yet simple, providing such standard amenities as beds, desks, television, private bathroom, and Internet access. Kitchens are not available at either facility. Students are housed two to a room; single rooms are not available.

Students also have the unique option to have a homestay experience with a local Chinese family. Each family has a family member who is currently working at PKU or is a retired PKU faculty member. Chinese host families are located 15–20 minutes from campus by public transportation. Students have their own room and share the living room, kitchen, and bathroom. Students are invited to family meals twice a week, but should budget for all other meals on the program. Chinese family members speak Chinese only. This option is highly recommended for students who want to live in an entirely Chinese language environment and are motivated to make rapid progress in Chinese language outside of class.

Housing for academic year students between the fall and spring semesters is arranged and included in the program fee.

Meals are not included in the program fee and are the responsibility of the student. Students usually eat at the many diverse

cafeterias available on campus. In addition, there are also several affordable restaurants on and off campus.

### Online Pre-Departure and On-Site Orientations

Students begin their study abroad experience in Beijing before leaving home—by participating in a CIEE Online Pre-Departure Orientation. Meeting with students online, the Resident Director shares information about the program and site, highlighting issues that alumni have said are important, and giving students time to ask questions before leaving home. The online orientation allows students to connect with others in the group, reflect on what they want to get out of the program, and learn what others in the group would like to accomplish. The CIEE goal for the pre-departure orientation is simple: to help students understand more about the program and site, as well as their goals for the program, so that they arrive to the program well-informed and return home having made significant progress toward their goals.

A mandatory orientation session conducted on site at the beginning of the program introduces students to the country, the culture, the local community and environment, and the academic program. Students take a language placement exam during this time as well. Ongoing support is provided on an individual and group basis throughout the program.

### Internet

There is Internet access in the PKU library and computer center. However, Internet access can be erratic and slow. Students can also access the Internet from their dormitory rooms for a small fee by opening a personal account at the computer center. CIEE pays for the first month of Internet access. Internet availability in each homestay varies. Students are encouraged to bring wireless-enabled laptops.

during the trip. Students are expected to maintain their language commitment during all program activities.

### Target Language Meals

To encourage students to use their Chinese in an informal setting, CIEE arranges bimonthly group meals for students, their language teachers, peer tutors, and Resident Staff. Students attending the optional meals are encouraged to speak only Chinese with their teachers and peers.

## engagement

### Short-Term Homestay Experience

Students living in the campus dormitories or off-campus housing may take part in an optional, short-term homestay experience for three weeks. This allows CIEE students to experience both the student and Chinese family living environment while in Beijing. Each homestay provides a private room, Internet access, and laundry facilities.

### Extended Cultural Excursion

An extended cultural excursion to Xi'an, Hangzhou, Nanjing, or Henan allows students to learn about areas outside of Beijing and to utilize their Chinese language skills under the leadership of the CIEE Resident Director. The location is selected prior to each term and changes each semester. Several Chinese students accompany the group to help foster a Chinese-speaking environment

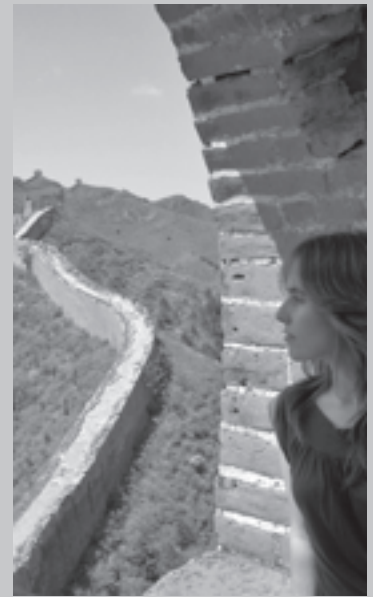
## culture

### Cultural Activities and Field Trips

Guided field trips are organized to historic and cultural sites in and around Beijing, such as the Great Wall, Tiananmen Square, the Temple of Heaven, the Dashanzi Art District, and various other famous sites of interest. There are additional site visits to supplement the area studies course. Cultural activities may include the Beijing Opera and an acrobatic performance. Classes in calligraphy, painting, taijiquan, and traditional Chinese musical instruments are also offered.

### Cultural Reimbursement Program

As a means of encouraging students to enrich their study abroad experience, CIEE offers a Cultural Reimbursement Program. Through this program, students are reimbursed for their participation in such cultural activities as Chinese film screenings, theater performances, traditional music concerts, and visits to local museums and historic places of interest. Students are encouraged to invite peer tutors to such events when possible.



## duration

### Fall

15 weeks: early September—mid-December

### Spring

15 weeks: early February—late May

### Academic Year

38 weeks: early September—late May

## eligibility

- Overall GPA 2.75
- 3–8 semesters of college-level Mandarin Chinese or equivalent\*
- 1 college-level Chinese area studies course recommended
- Peking University does not accept students who are citizens of the People's Republic of China (PRC), Taiwan ROC, Hong Kong SAR, or Macau. This includes those who are permanent U.S. residents.

\*Depending upon their language background, students with more than 8 semesters of college-level Mandarin Chinese or its equivalent and students with near native fluency may not be appropriate for this program. These students should consider applying to the CIEE Advanced Chinese Studies program instead. The Advanced Chinese Studies program has different requirements, earlier application deadlines, and a longer academic calendar, so Intensive Chinese Language students may not transfer to this program once on site. Students arriving with superior language fluency who test above the advanced level classes at the Peking University Language Center may be restricted to only to few appropriate Chinese language electives (marked in the Coursework section by an asterisk). There are also different fees and information associated with this program. Please see the Beijing Advanced Chinese Studies program section of this catalog.

## costs

### CIEE Fees

Fall 2011: \$12,600

Spring 2012: available 8/15/11

Academic Year 2011–12: \$24,000

The CIEE program fees for 2011–12 includes an optional on-site airport meet and greet, tuition, housing, orientation, full-time program leadership and support, cultural activities, local excursions, field trips, pre-departure advising, visa fees, and a CIEE iNext travel card which provides insurance and other travel benefits.

### Estimated Additional Costs (Fall 2011)

Transportation (round-trip based on U.S. West Coast departure)	\$ 1,550
Personal Expenses	\$ 2,150
Meals	\$ 1,200
Books and Supplies	\$ 50
Local Transportation	\$ 400
<b>Total Estimated Additional Costs</b>	<b>\$ 5,350</b>

Check our website for current fees.

## coursework

### Program Requirements

A full course load ranges from four to five courses for the semester and eight to ten courses for the academic year. All students take Readings in Chinese, Spoken Chinese, the Language and Culture Practicum, and one to three other courses, depending on the level of the individual student's Readings in Chinese course. Students are placed at their level based on a language placement exam taken during orientation. Students may also enroll in the CIEE Seminar on Living and Learning.

Because PKU strictly adheres to matching test score values to course placement in the PKU International College for Chinese Language Studies, students may find it difficult to switch classes after the placement process. Therefore, students are advised to study their past textbooks and review their characters prior to taking the placement test. Students may also take one elective taught in English.

### Credit

Total recommended credit for the semester is 16 semester/24 quarter hours and 31 semester/46.5 quarter hours for the academic year. Students who consider taking more than 16 semester hours may only do so with the written approval from their home institution during the course registration process.

Contact hours and credits for the required language courses are noted in the course descriptions. Peking University offers elective language courses at 60 contact hours for recommended credit of 3 semester/4.5 quarter hours or 30 contact hours with recommended credit of 1.5 semester/2.25 quarter hours. CIEE area studies electives, taught in English, have 45 contact hours and recommended credit is 3 semester/4.5 quarter hours.

### Examples of Potential Course Structure for Semester Students

#### #1

Readings in Chinese Advanced I: 4.5 credits  
Spoken Chinese Advanced I: 4.5 credits  
Chinese or English Elective: 3 credits  
Chinese Language Elective(s): 1.5 credits \*2  
Chinese Language and Culture Practicum: 1 credit  
Total: 16 credits

#### #2

Readings in Chinese Intermediate: 6 credits  
Spoken Chinese Intermediate: 4.5 credits  
Chinese or English Elective: 3 credits  
Chinese Language Elective: 1.5 credits  
Chinese Language and Culture Practicum: 1 credit  
Total: 16 credits

### Languages of Instruction

Mandarin Chinese, English

### Faculty

All Chinese language courses are taught by faculty from the PKU International College for Chinese Language Studies. The area studies electives are taught by PKU faculty, local Chinese scholars, and/or Western scholars residing in Beijing.

### Textbooks and Teaching Materials

To learn about the textbooks and teaching materials being used on CIEE programs in China and Taiwan, visit [www.ciee.org/chinatextbooks](http://www.ciee.org/chinatextbooks).

Learn more about the CIEE Greater China Initiative for Study Abroad at [www.ciee.org/studychina](http://www.ciee.org/studychina).

## courses

### Required CIEE Course

#### CHIN 3005 CBEJ

#### Language and Culture Practicum

This one-credit language practicum supplements the language training by PKU. This practicum is designed and facilitated by the CIEE Resident Director and integrates many of the activities in the co-curricular program through task-based exercises and assignments using spoken and written Chinese. Contact hours: 15. Recommended credit: 1 semester/1.5 quarter hours. *Coordinator: Dr. Yuan Tian, CIEE Resident Director*

### Required Peking University Language Courses

#### Readings in Chinese/Hanyu

*Concentrating on the study of written Chinese, these courses are designed to advance the student's skill in reading and writing through the study of short essays and stories. They include exercises in tone drills, vocabulary, and grammatical usage.*

#### Reading in Chinese—Elementary

This course is only appropriate for students who have met the eligibility requirements of the program, but demonstrated language skills below that of a typical student who has taken three semesters of Chinese in the United States. Textbooks: *Boya Chinese—Dibu II—博雅汉语初级起步篇II*. Contact hours: 120. Recommended credit: 6 semester/9 quarter hours.

#### Readings in Chinese—Intermediate

This course contains content found in Second Semester, Second Year Chinese, and First Semester, Third Year Chinese in a U.S. curriculum. Textbook: *Boya Chinese Jiasu II—博雅汉语准中级加速篇II*. Contact hours: 120. Recommended credit: 6 semester/9 quarter hours.

#### Readings in Chinese—High Intermediate

This course contains content found in Third Year Chinese in a U.S. curriculum. Textbook: *Boya Chinese Chongci II—博雅汉语中级冲刺篇II*. Contact hours: 120. Recommended credit: 6 semester/9 quarter hours.

#### Readings in Chinese—Advanced I

This course contains content found in Fourth Year Chinese in a U.S. curriculum. Textbook: *Boya Chinese Feixiang II—博雅汉语高级飞翔篇II*. Contact hours: 90. Recommended credit: 4.5 semester/6.75 quarter hours.

#### Readings in Chinese—Advanced II

This course contains content found in Fifth Year Chinese in a U.S. curriculum. Textbook: *Boya Chinese Feixiang II—博雅汉语高级飞翔篇III*. Contact hours: 90. Recommended credit: 4.5 semester/6.75 quarter hours.

### Spoken Chinese/Kouyu

*These courses emphasize conversational Chinese through texts, which include exercises in vocabulary, grammar, and sentence construction. The exercises are context-oriented and provide students practical vocabulary through dialogues and pattern drills.*

#### Spoken Chinese—Elementary

This course is only appropriate for students who have met the eligibility requirements of the program, but demonstrated language skills below that of a typical student who has taken three semesters of Chinese in the U.S. Textbook: *Elementary Spoken Chinese II—初级汉语口语II*. Contact hours: 90. Recommended credit: 4.5 semester/6.75 quarter hours.

#### Spoken Chinese—Intermediate

This course contains content found in Third Year Chinese in a U.S. curriculum. Textbook: *Elementary Spoken Chinese for Improvement—初级汉语口语提高篇*. Contact hours: 90. Recommended credit: 4.5 semester/6.75 quarter hours.

#### Spoken Chinese—High Intermediate

This course contains content found in Second Semester, Third Year Chinese, and First Semester, Fourth Year Chinese in a U.S. curriculum. Textbook: *Intermediate Spoken Chinese II—中级汉语口语II*. Contact hours: 90. Recommended credit: 4.5 semester/6.75 quarter hours.

#### Spoken Chinese—Advanced I

This course contains content found in Second Semester, Fourth Year Chinese, and First Semester, Fifth Year Chinese in a U.S. curriculum. Textbook: *Advanced Spoken Chinese I—高级汉语口语I*. Contact hours: 90. Recommended credit: 4.5 semester/6.75 quarter hours.



(courses continued from previous page)

## Spoken Chinese—Advanced II

This course contains content found in Fifth Year Chinese in a U.S. curriculum. Textbook: *Hand-outs only*. Contact hours: 90. Recommended credit: 4.5 semester/6.75 quarter hours.

## Chinese Language Electives at Peking University

The below courses marked by an asterisk require advanced-high or superior level Chinese and may be too difficult for many students on this program.

### Fall and Spring

#### Advanced Business Chinese Language/Gaoji Shangwu Hanyu

This course fosters listening comprehension skills, speaking, reading, and writing of Chinese needed in business activities. Students deepen their understanding of the economic life, society, and culture of China in relation to business.

#### Advanced Newspaper Reading/Gaoji Baokan Yuedu

This course uses a great deal of reading materials in Chinese, enabling students to learn about the Chinese economy, culture, law, and education systems. It is designed to help students master Chinese newspaper reading and expand their knowledge and vocabulary.

#### Advanced Writing/Gaoji Xiezuo

This course helps advanced Chinese learners improve their written expressions and focuses on increasing vocabulary and reading skills.

#### Chinese Function Words/Hanyu Xuci\*

This course helps students master the usage of main Chinese particles, grammar, and expressions. It focuses primarily on practical usage of particles and somewhat on theory.

#### Chinese Study with Films/Yingshi Hanyu

This course uses Chinese film as a way to increase students' vocabulary and insight into the world of Chinese cinema.

#### Home With Kids—A Multi-skill Chinese Course/Jia You Er-nü

This course helps students to understand the Chinese people's daily life and Chinese culture through audiovisual and oral exercises. At the same time, students improve their Chinese proficiency level, especially in intercultural communicative competence.

#### Intermediate Business Chinese Language/Zhongji Shangwu Hanyu

This course teaches Chinese language in relation to business and communication. It enables students to engage in simple business activities such as visiting a company, attending meetings, ordering goods, making inquiries and claims, and negotiating insurance.

#### Intermediate Chinese Characters/Zhongji Hanzi

This course teaches Chinese characters, learning methods, ways to improve compositions, pronunciation and meaning of Chinese characters, and helps student develop more complex vocabulary.

#### Intermediate Listening Comprehension/Zhongji Tingli

This course helps students improve their language skills and listening abilities with exercises in Chinese.

#### Intermediate Writing/Zhongji Xiezuo

This course provides practice in learning Chinese characters, as well as helps student increase their vocabulary, learn new grammar, and improve their writing skills.

#### Pronunciation Correction/Zhengyin

This course helps students correct pronunciation mistakes and trains them in proper pronunciation. It also helps students understand pronunciation methods and enables them to form correct pronunciation habits.

#### Recitation and Pronunciation Correction/Langdu Yu Zhengji

This course focuses on correcting pronunciation and on correcting tones of consonants and vowels. Students work on reciting poems and prose precisely and fluently to understand the rhythms of the Chinese language.

#### Series Lectures on Chinese Culture/Zhongguo Wenhua Xilie Jiangzuo\*

Every teacher of the School of Chinese as a Second Language gives one lecture. There are 14 topics in total.

## Fall

#### Advanced Chinese Characters/Gaoji Hanzi

This course teaches the features and rules, pronunciation, and meaning of Chinese characters. It enables students to master Class D and part of Class E Chinese characters stipulated in the HSK Outline of Chinese Characters Levels with the help of radicals indicating pronunciation.

#### China Overview/Zhongguo Gaikuang\*

This course enables international students to learn about China and its language. It also helps them gain relevant professional knowledge, while significantly improving their reading, listening comprehension, and speaking skills.

#### Intermediate Chinese Language Grammar/Zhongji Yufa

This is a grammar course for high intermediate language students.

#### Intermediate Reading/Zhongji Yuedu

This course helps students master Chinese language reading skills and teaches systematic reading habits.

## Spring

#### Analysis on Errors in Chinese Learning/Yufa Cuowu Fenxi

This course focuses on helping students identify the source of their errors to help them avoid repeating the same mistakes.

#### Ancient Chinese/Gudai Hanyu\*

This course teaches frequent vocabulary, grammar, and general cultural knowledge of ancient Chinese. It fosters basic competency in reading ancient Chinese literature and further improves students' written Chinese.

#### English-Chinese Translation/Yinghan Fanji

In this course, students master basic methods for English-Chinese translation and translate general articles of extensive range. It reinforces their understanding of Chinese sentence structures and expression rules, as well as helps them improve their ability to express themselves and expand their vocabulary. It also helps strengthen students' ability to communicate culturally.

#### Intermediate Newspaper and Periodicals Reading/Zhongji Baokan Yuedu

This course guides students to read Chinese newspapers and periodicals extensively, to help them correctly understand the contents and master the skills for reading Chinese newspapers and periodicals, to improve their understanding of China and Chinese culture, and to expand their vocabulary and improve their ability in Chinese reading.

## Elective CIEE Courses—in English

CIEE offers two or three elective courses, taught in English, each semester. Each course has a limited enrollment. Students may only take one course in English per semester due to the language learning goals of this program. Elective courses are subject to change, and final elective course listings are available after acceptance.

#### CLST 3001 CBEJ

##### Seminar on Living and Learning in Beijing

This seminar is designed to improve students' intercultural communication and competence while studying abroad by considering how the Chinese are different from and similar to themselves and others. The course offers opportunities, both in and outside the classroom, to develop insights and the skills necessary to interact effectively and appropriately, and to gain a better understanding and appreciation of the cultural richness of China.

#### COMM 3002 CBEJ/BUSI 3004 CBEJ

##### Intercultural Negotiation for Business in China

This course was created for students seeking a future career in China in the fields of business or international relations. The purpose of the course is to help students understand the ways in which culture interrelates with and affects communication processes by using Chinese culture as an example. Intercultural learning involves affective, behavioral, and cognitive processes. Throughout this course, students have the opportunity to gain knowledge, skills, and attitudes that increase their intercultural communication competence, especially their ability to communicate effectively in Chinese within the workplace. A variety of teaching methods that include lecture, guest lectures, discussion, group work, critical incidents, case studies, and field trips are used to address intercultural issues. The course is taught in English with some examples provided in Mandarin Chinese. Instructor: Donny Huang, Founder and CEO of 4Stones Cross-Cultural Consulting Inc.

**POLI 3002 CBEJ****Government and Politics of China**

This course is designed to examine Chinese government, politics and political power, and the Chinese government's role in Chinese society. Discussions include how the Chinese government conducts its business, what is involved in Chinese politics, and how the Chinese political system and political power structure are organized and operate. The course helps students understand the unique character of Chinese politics, the policy decision-making process, power distribution, and their impact on Chinese society, as well as on the public and private sectors.

**RELI 3001 CBEJ****Chinese Philosophies and Modern China**

This course is designed to help students understand Chinese philosophies and religions, including Confucianism, Daoism, and Buddhism, from a comparative and holistic perspective. It also helps students understand how Chinese philosophies have impacted modern China's value system and its economic growth. Both primary and secondary texts are introduced in an effort to thoroughly understand classical and Neo-Confucianism, Daoism, and Buddhism and at the same time, examine how these traditional thoughts and values have shaped the modern Chinese worldview and China's modernization.

**a student's story**

This past year, I had many amazing adventures in the most populous nation on earth. I've seen things that I never knew existed. I've experienced ways of life that I never thought possible. I've learned things that I will never forget. China is growing, China is changing, and I am proud to be a part of it.

However, China's growth isn't just that of the economy. Everyone who refers to the Asian boom is talking about markets, technology, and trade. They are talking about people with more money, more power, and more opportunity. For me however, China's growth isn't just that of the economy, it is a growth of culture as well. As this society continues its break-neck sprint to modernity, the people aren't just along for the ride. Every day there are challenges to this ancient civilization, presented by new sources of information, goods, and social interactions that few Chinese have ever encountered before. The people of China are a dynamic people, clever and resilient, bound for success even in the time of dramatic social and economic revolution.

Through my travels in and around China, I have had the joy of experiencing a small portion of these drastic changes. I've seen the skyscrapers piercing the mists of the Pacific as if in challenge to the heavens on high. I have seen streets full of BMWs, Volkswagens, and pedestrians with suits and brief-cases. Alongside these pillars of modernization, I have seen donkey carts pulling cabbage to the market, dumplings being steamed in narrow alleys north of the Forbidden City, flat-bed bicycles piled with newspapers, and tractors stacked with hay. I've chatted with monks in the temples of Wu Tai Shan, clerics in the mosques of Xi'an, businessmen at the Shangri-La hotel, farmers in Pingyao, factory workers in Qingdao, and people from all over who come to see the grandeur of the eastern capital. China and its people are growing.

— Former Program Participant, University of the Pacific

