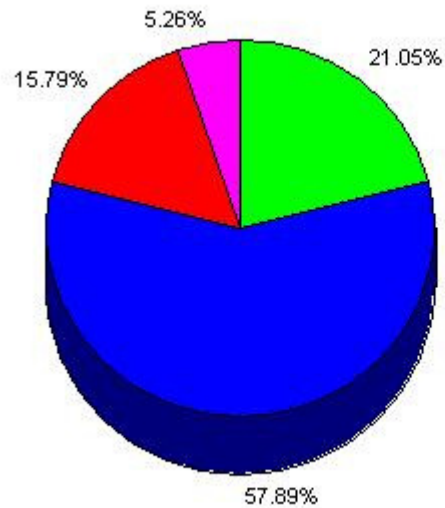


Spring 2009 - Seoul AS

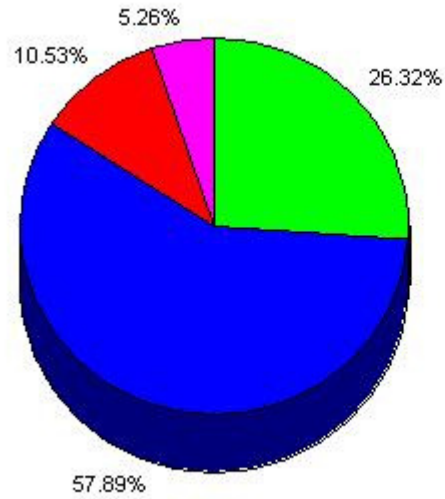
Question 1: The program information I received from CIEE before my departure was useful.

Option	Selected (# of times)	Percentage
Strongly Agree	4	21%
Agree	11	58%
Neither Agree nor Disagree	3	16%
Disagree	1	5%
Strongly Disagree	0	0%



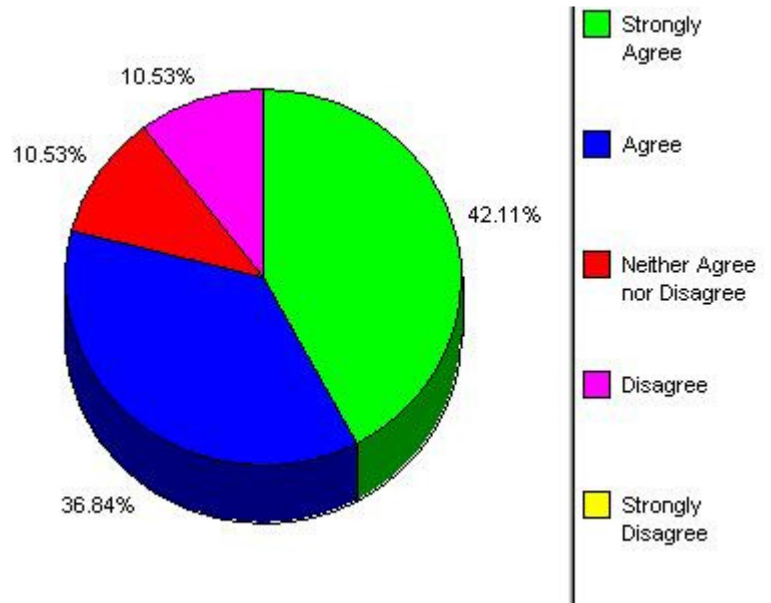
Question 2: The MYCIEE systems allowed me to access program information effectively.

Option	Selected (# of times)	Percentage
Strongly Agree	5	26%
Agree	11	58%
Neither Agree nor Disagree	2	11%
Disagree	1	5%
Strongly Disagree	0	0%



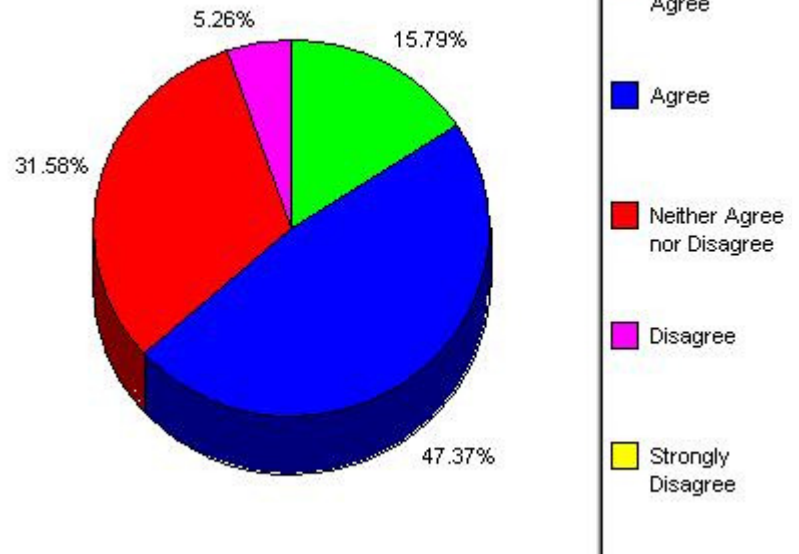
Question 3: I was satisfied with the quality of the responses made by e-mail or telephone by U.S. based staff members.

Option	Selected (# of times)	Percentage
Strongly Agree	8	42%
Agree	7	37%
Neither Agree nor Disagree	2	11%
Disagree	2	11%
Strongly Disagree	0	0%



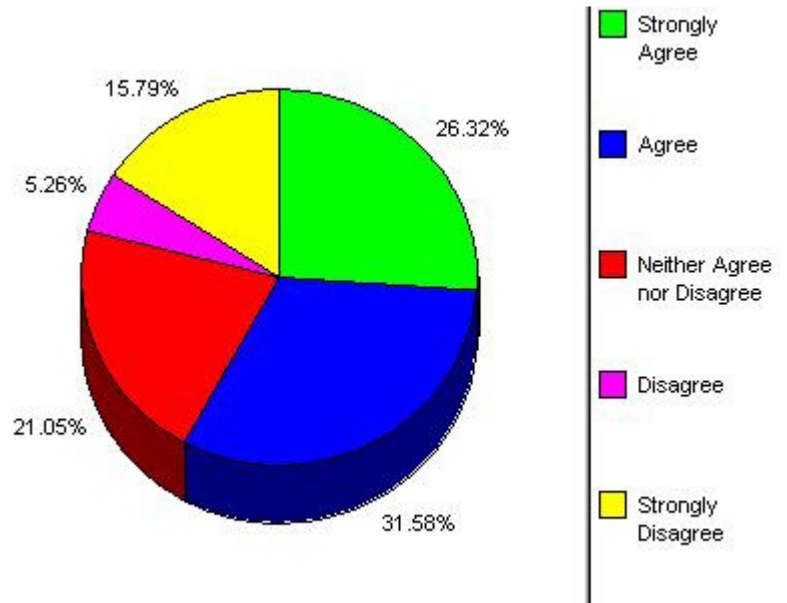
Question 5: The estimated additional financial costs provided by CIEE during the predeparture phase allowed me to budget appropriately.

Option	Selected (# of times)	Percentage
Strongly Agree	3	16%
Agree	9	47%
Neither Agree nor Disagree	6	32%
Disagree	1	5%
Strongly Disagree	0	0%



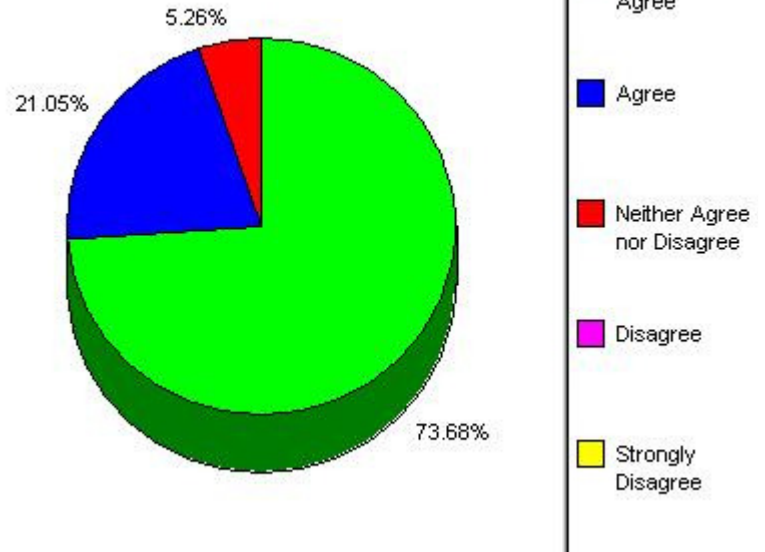
Question 7: The CIEE on-site orientation prepared me for my study abroad experience in the local environment.

Option	Selected (# of times)	Percentage
Strongly Agree	5	26%
Agree	6	32%
Neither Agree nor Disagree	4	21%
Disagree	1	5%
Strongly Disagree	3	16%



Question 9: CIEE-provided housing was satisfactory.

Option	Selected (# of times)	Percentage
Strongly Agree	14	74%
Agree	4	21%
Neither Agree nor Disagree	1	5%
Disagree	0	0%
Strongly Disagree	0	0%



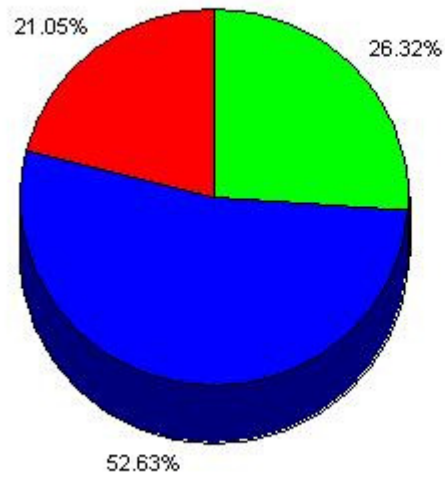
Question 10: I was satisfied with the quality of the CIEE-organized local cultural activities.

Option	Selected (# of times)	Percentage
Strongly Agree	3	16%
Agree	11	58%
Neither Agree nor Disagree	4	21%
Disagree	1	5%
Strongly Disagree	0	0%



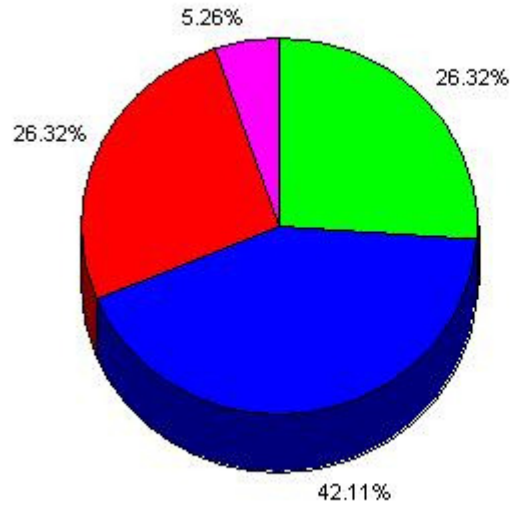
Question 11: I was satisfied with the quality of the CIEE-organized longer (overnight or weekend) excursions.

Option	Selected (# of times)	Percentage
Strongly Agree	5	26%
Agree	10	53%
Neither Agree nor Disagree	4	21%
Disagree	0	0%
Strongly Disagree	0	0%



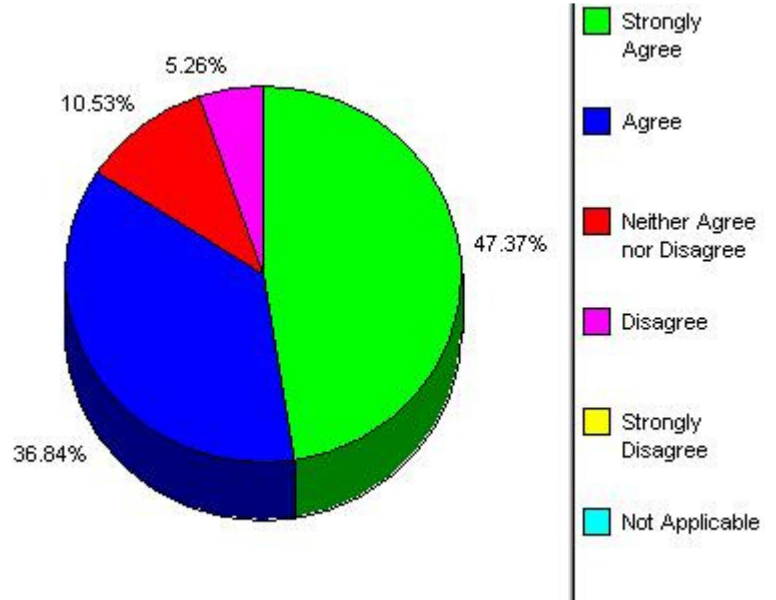
Question 13: The overall academic program was rewarding.

Option	Selected (# of times)	Percentage
Strongly Agree	5	26%
Agree	8	42%
Neither Agree nor Disagree	5	26%
Disagree	1	5%
Strongly Disagree	0	0%



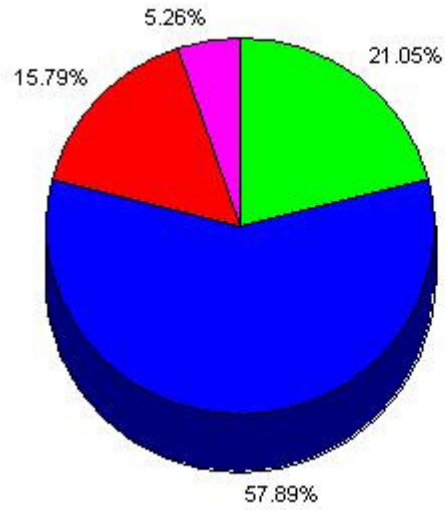
Question 14: If applicable, participation in the program allowed me to advance in my language education more comprehensively than I would have at my home school.

Option	Selected (# of times)	Percentage
Strongly Agree	9	47%
Agree	7	37%
Neither Agree nor Disagree	2	11%
Disagree	1	5%
Strongly Disagree	0	0%
Not Applicable	0	0%



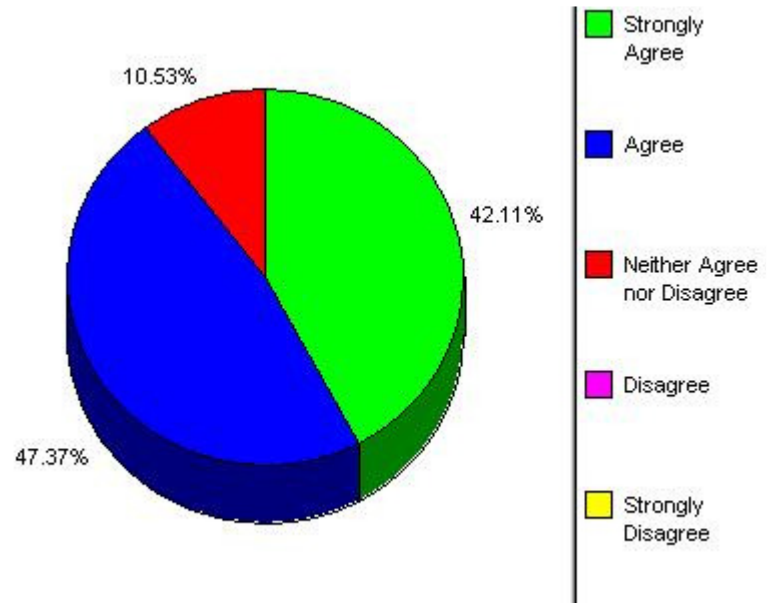
Question 31: The program met its goals, as presented above.

Option	Selected (# of times)	Percentage
Strongly Agree	4	21%
Agree	11	58%
Neither Agree nor Disagree	3	16%
Disagree	1	5%
Strongly Disagree	0	0%



Question 35: Overall, my evaluation of the program is positive.

Option	Selected (# of times)	Percentage
Strongly Agree	8	42%
Agree	9	47%
Neither Agree nor Disagree	2	11%
Disagree	0	0%
Strongly Disagree	0	0%



Question 36: I would recommend this program to a friend.

Option	Selected (# of times)	Percentage
Strongly Agree	7	37%
Agree	9	47%
Neither Agree nor disagree	1	5%
Disagree	2	11%
Strongly Disagree	0	0%

