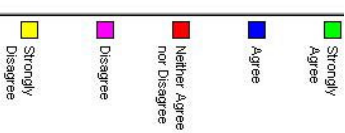
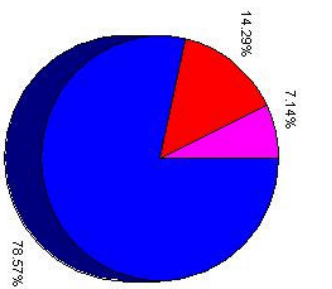


Spring 2007 Student Evaluation - Madrid

Evaluation Status Closed on 6/15/2007
 Number of Replies 14
 Number of Potential Replies 14
 Percent Complete 100%

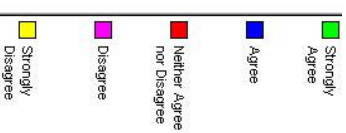
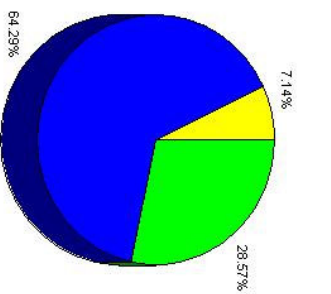
Question 1: The written information that I received before my departure was accurate and useful.

Option	Selected (# of times)	Percentage
Strongly Agree	0	0%
Agree	11	79%
Neither Agree nor Disagree	2	14%
Disagree	1	7%
Strongly Disagree	0	0%



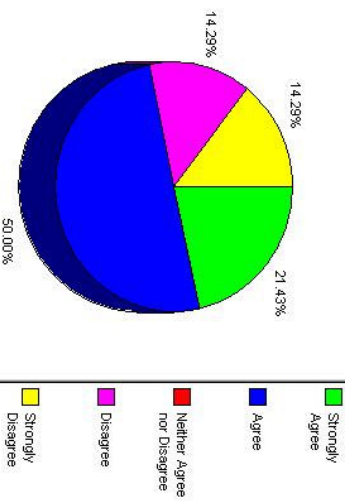
Question 2: I received written information from CIEE in a timely manner.

Option	Selected (# of times)	Percentage
Strongly Agree	4	29%
Agree	9	64%
Neither Agree nor Disagree	0	0%
Disagree	0	0%
Strongly Disagree	1	7%



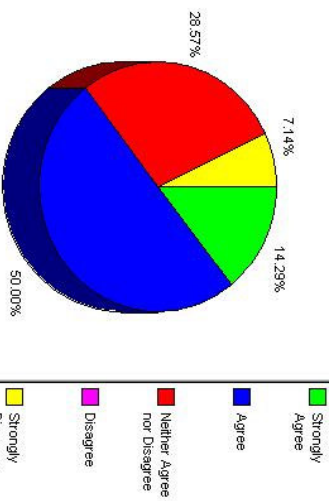
Question 3: I was satisfied with the timeliness and quality of the responses made by e-mail or telephone by U.S. based staff members in general.

Option	Selected (# of times)	Percentage
Strongly Agree	3	21%
Agree	7	50%
Neither Agree nor Disagree	0	0%
Disagree	2	14%
Strongly Disagree	2	14%



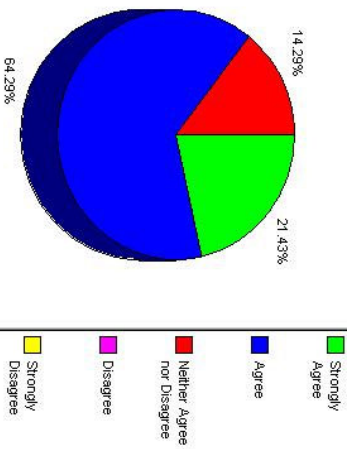
Question 5: Please comment on the accuracy of the financial information included in the Student Handbook with a review of the recommended amounts of money and methods of handling money. Was this information accurate to the best of your recollection?

Option	Selected (# of times)	Percentage
Strongly Agree	2	14%
Agree	7	50%
Neither Agree nor Disagree	4	29%
Disagree	0	0%
Strongly Disagree	1	7%



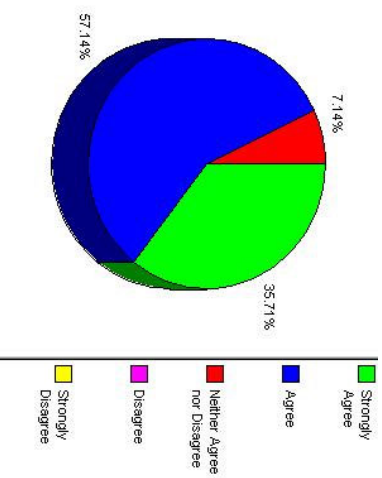
Question 7: The information that I received during orientation was relevant and useful.

Option	Selected (# of times)	Percentage
Strongly Agree	3	21%
Agree	9	64%
Neither Agree nor Disagree	2	14%
Disagree	0	0%
Strongly Disagree	0	0%



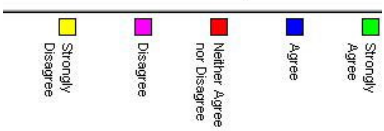
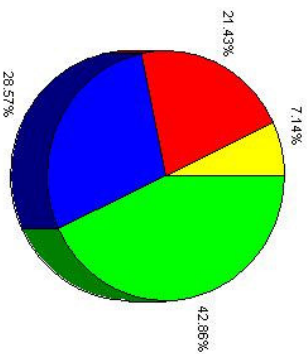
Question 8: It was easy to understand and retain what was being communicated during orientation.

Option	Selected (# of times)	Percentage
Strongly Agree	5	36%
Agree	8	57%
Neither Agree nor Disagree	1	7%
Disagree	0	0%
Strongly Disagree	0	0%



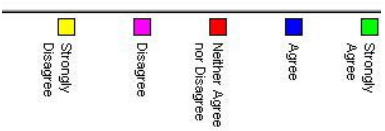
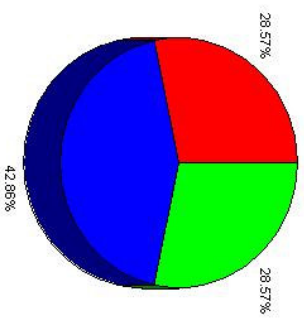
Question 11: I was satisfied with the quality of the housing experience given the context of the program site.

Option	Selected (# of times)	Percentage
Strongly Agree	6	43%
Agree	4	29%
Neither Agree nor Disagree	3	21%
Disagree	0	0%
Strongly Disagree	1	7%



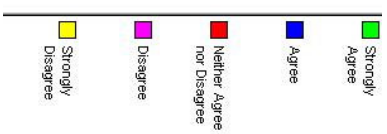
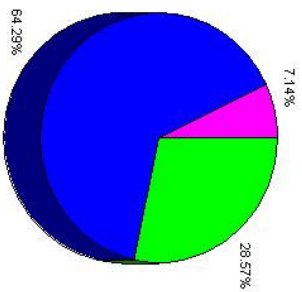
Question 12: I was satisfied with the quality of meals given the context of the program site.

Option	Selected (# of times)	Percentage
Strongly Agree	4	29%
Agree	6	43%
Neither Agree nor Disagree	4	29%
Disagree	0	0%
Strongly Disagree	0	0%



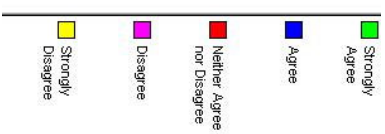
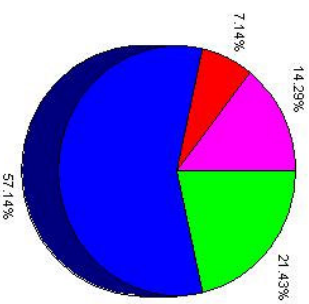
Question 13: I was satisfied with the quality of the co-curricular activities such as field trips.

Option	Selected (# of times)	Percentage
Strongly Agree	4	29%
Agree	9	64%
Neither Agree nor Disagree	0	0%
Disagree	1	7%
Strongly Disagree	0	0%



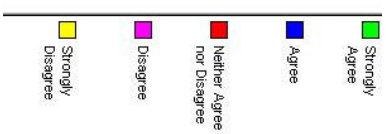
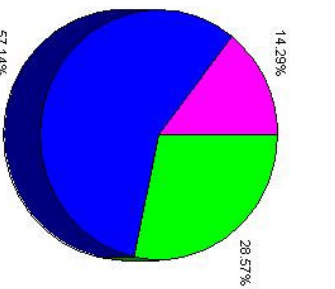
Question 21: The program met its goals, as presented above.

Option	Selected (# of times)	Percentage
Strongly Agree	3	21%
Agree	8	57%
Neither Agree nor Disagree	1	7%
Disagree	2	14%
Strongly Disagree	0	0%



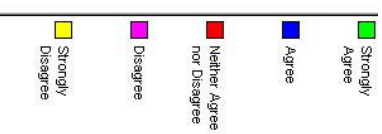
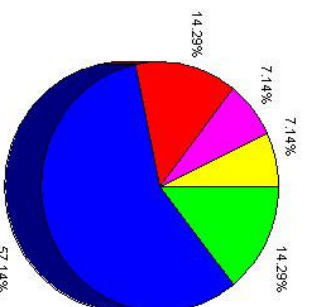
Question 29: Overall, my evaluation of the program is positive.

Option	Selected (# of times)	Percentage
Strongly Agree	4	29%
Agree	8	57%
Neither Agree nor Disagree	0	0%
Disagree	2	14%
Strongly Disagree	0	0%



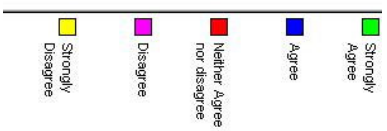
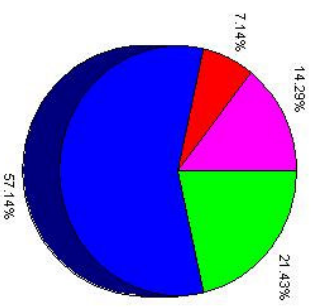
Question 30: My experience on this program met (or exceeded) my pre-departure expectations.

Option	Selected (# of times)	Percentage
Strongly Agree	2	14%
Agree	8	57%
Neither Agree nor Disagree	2	14%
Disagree	1	7%
Strongly Disagree	1	7%



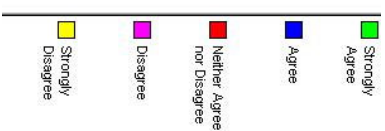
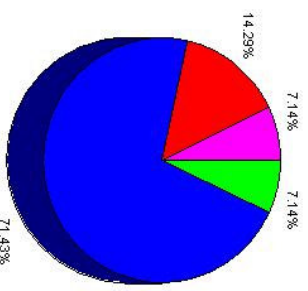
Question 31: I would recommend this program to a friend.

Option	Selected (# of times)	Percentage
Strongly Agree	3	21%
Agree	8	57%
Neither Agree nor disagree	1	7%
Disagree	2	14%
Strongly Disagree	0	0%



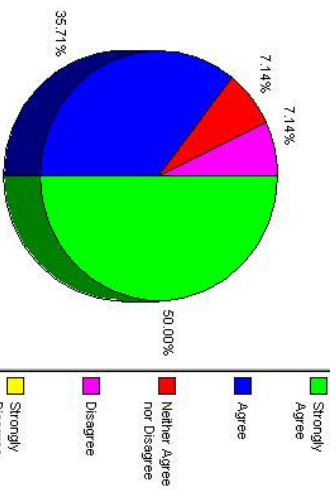
Question 34: In general, the level of difficulty of the courses was appropriate.

Option	Selected (# of times)	Percentage
Strongly Agree	1	7%
Agree	10	71%
Neither Agree nor Disagree	2	14%
Disagree	1	7%
Strongly Disagree	0	0%



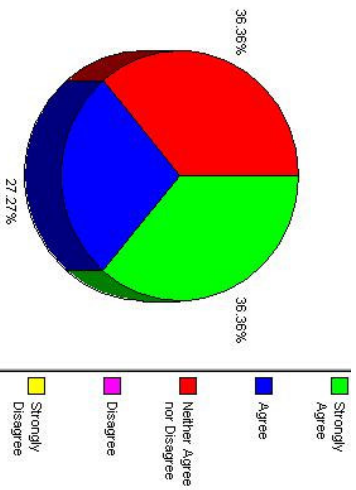
Question 36: If applicable, participation in the program allowed me to advance in my language education faster and more comprehensively than I would have at my home school.

Option	Selected (# of times)	Percentage
Strongly Agree	7	50%
Agree	5	36%
Neither Agree nor Disagree	1	7%
Disagree	1	7%
Strongly Disagree	0	0%



Question 37: If applicable, I was satisfied with the overall quality of the regular university classes, i.e., courses that were taken at the host institution and attended by non-program students.

Option	Selected (# of times)	Percentage
Strongly Agree	4	36%
Agree	3	27%
Neither Agree nor Disagree	4	36%
Disagree	0	0%
Strongly Disagree	0	0%



Question 38: If applicable, I was satisfied with the overall quality of CIEE classes, i.e., courses that were attended solely by program participants.

Option	Selected (# of times)	Percentage
Strongly Agree	0	0%
Agree	7	78%
Neither Agree nor Disagree	2	22%
Disagree	0	0%
Strongly Disagree	0	0%

