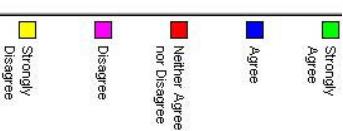
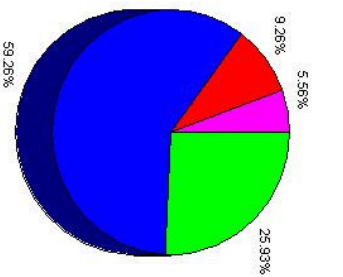


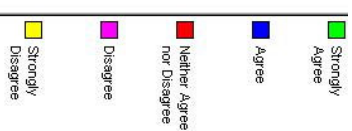
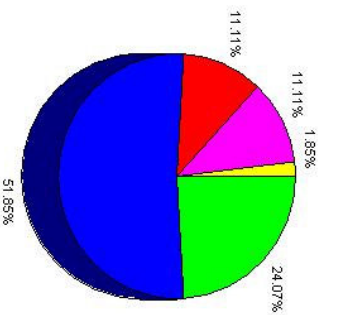
Question 1: The written information that I received before my departure was accurate and useful.

Option	Selected (# of times)	Percentage
Strongly Agree	14	26%
Agree	32	59%
Neither Agree nor Disagree	5	9%
Disagree	3	6%
Strongly Disagree	0	0%



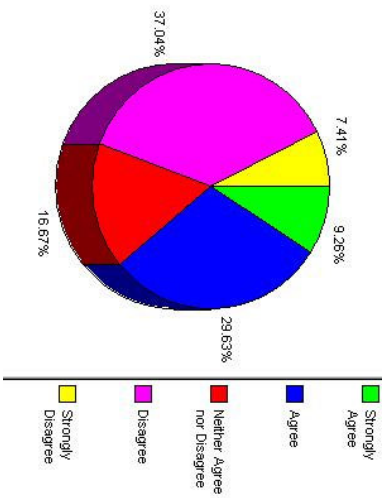
Question 2: I received written information from CIEE in a timely manner.

Option	Selected (# of times)	Percentage
Strongly Agree	13	24%
Agree	28	52%
Neither Agree nor Disagree	6	11%
Disagree	6	11%
Strongly Disagree	1	2%



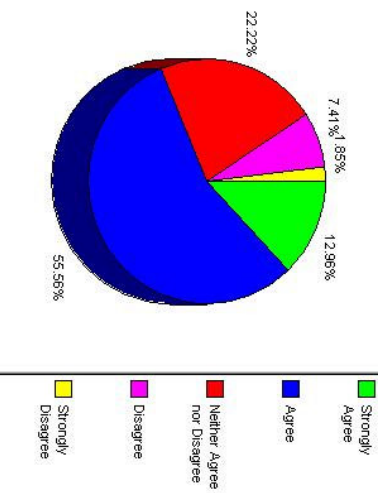
Question 3: I was satisfied with the timeliness and quality of the responses made by e-mail or telephone by U.S. based staff members in general.

Option	Selected (# of times)	Percentage
Strongly Agree	5	9%
Agree	16	30%
Neither Agree nor Disagree	9	17%
Disagree	20	37%
Strongly Disagree	4	7%



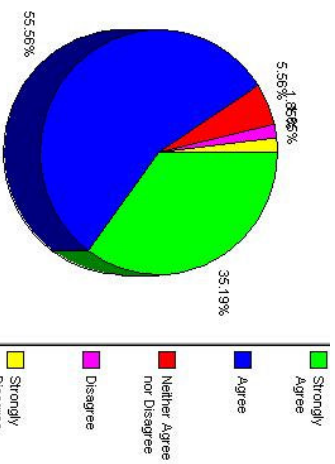
Question 5: Please comment on the accuracy of the financial information included in the Student Handbook with a review of the recommended amounts of money and methods of handling money. Was this information accurate to the best of your recollection?

Option	Selected (# of times)	Percentage
Strongly Agree	7	13%
Agree	30	56%
Neither Agree nor Disagree	12	22%
Disagree	4	7%
Strongly Disagree	1	2%



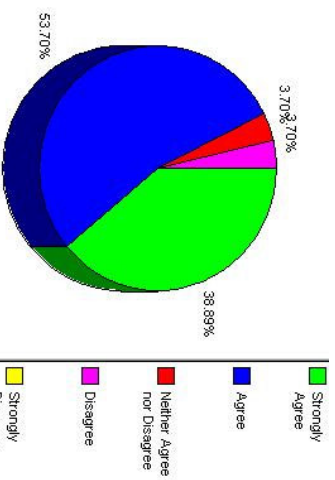
Question 7: The information that I received during orientation was relevant and useful.

Option	Selected (# of times)	Percentage
Strongly Agree	19	35%
Agree	30	56%
Neither Agree nor Disagree	3	6%
Disagree	1	2%
Strongly Disagree	1	2%



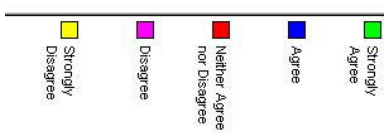
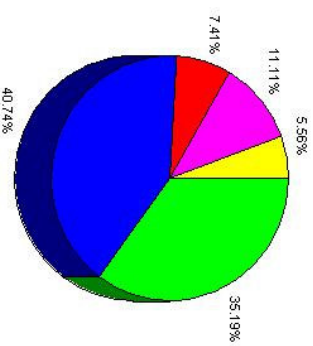
Question 8: It was easy to understand and retain what was being communicated during orientation.

Option	Selected (# of times)	Percentage
Strongly Agree	21	39%
Agree	29	54%
Neither Agree nor Disagree	2	4%
Disagree	2	4%
Strongly Disagree	0	0%



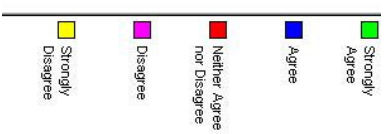
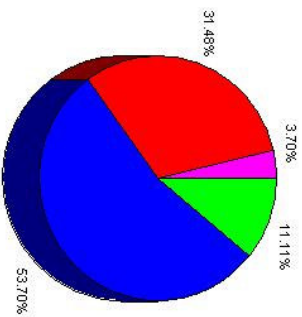
Question 11: I was satisfied with the quality of the housing experience given the context of the program site.

Option	Selected (# of times)	Percentage
Strongly Agree	19	35%
Agree	22	41%
Neither Agree nor Disagree	4	7%
Disagree	6	11%
Strongly Disagree	3	6%



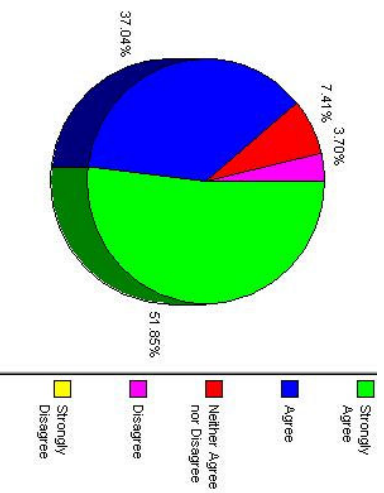
Question 12: I was satisfied with the quality of meals given the context of the program site.

Option	Selected (# of times)	Percentage
Strongly Agree	6	11%
Agree	29	54%
Neither Agree nor Disagree	17	31%
Disagree	2	4%
Strongly Disagree	0	0%



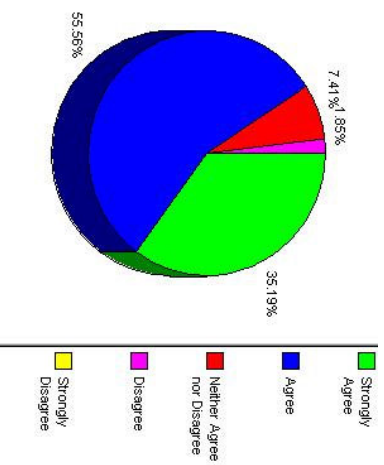
Question 13: I was satisfied with the quality of the co-curricular activities such as field trips.

Option	Selected (# of times)	Percentage
Strongly Agree	28	52%
Agree	20	37%
Neither Agree nor Disagree	4	7%
Disagree	2	4%
Strongly Disagree	0	0%



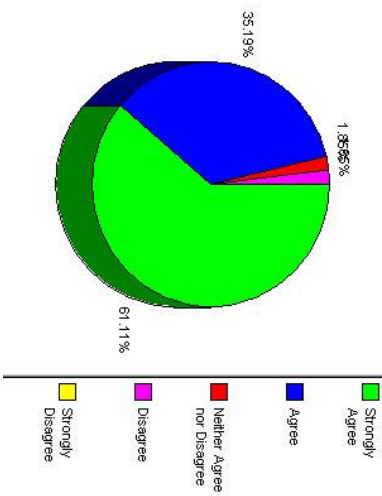
Question 21: The program met its goals, as presented above.

Option	Selected (# of times)	Percentage
Strongly Agree	19	35%
Agree	30	56%
Neither Agree nor Disagree	4	7%
Disagree	1	2%
Strongly Disagree	0	0%



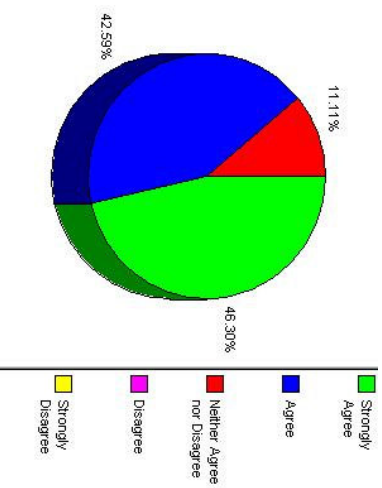
Question 29: Overall, my evaluation of the program is positive.

Option	Selected (# of times)	Percentage
Strongly Agree	33	61%
Agree	19	35%
Neither Agree nor Disagree	1	2%
Disagree	1	2%
Strongly Disagree	0	0%



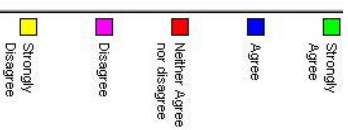
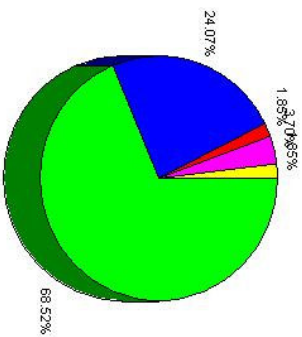
Question 30: My experience on this program met (or exceeded) my pre-departure expectations.

Option	Selected (# of times)	Percentage
Strongly Agree	25	46%
Agree	23	43%
Neither Agree nor Disagree	6	11%
Disagree	0	0%
Strongly Disagree	0	0%



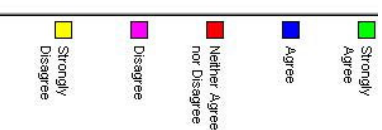
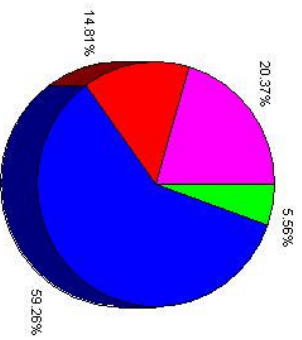
Question 31: I would recommend this program to a friend.

Option	Selected (# of times)	Percentage
Strongly Agree	37	69%
Agree	13	24%
Neither Agree nor disagree	1	2%
Disagree	2	4%
Strongly Disagree	1	2%



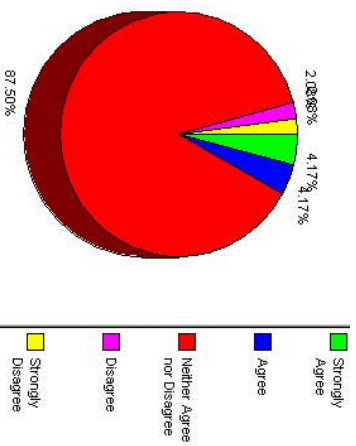
Question 34: In general, the level or difficulty of the courses was appropriate.

Option	Selected (# of times)	Percentage
Strongly Agree	3	6%
Agree	32	59%
Neither Agree nor Disagree	8	15%
Disagree	11	20%
Strongly Disagree	0	0%



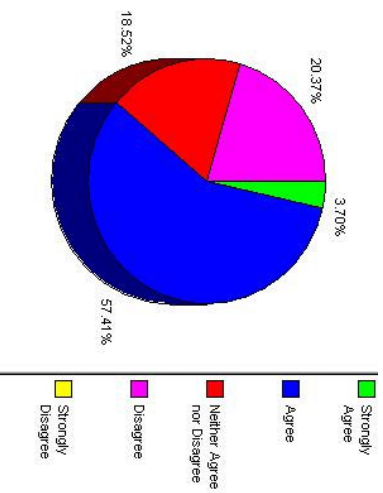
Question 36: If applicable, participation in the program allowed me to advance in my language education faster and more comprehensively than I would have at my home school.

Option	Selected (# of times)	Percentage
Strongly Agree	2	4%
Agree	2	4%
Neither Agree nor Disagree	42	88%
Disagree	1	2%
Strongly Disagree	1	2%



Question 37: If applicable, I was satisfied with the overall quality of the regular university classes, i.e., courses that were taken at the host institution and attended by non-program students.

Option	Selected (# of times)	Percentage
Strongly Agree	2	4%
Agree	31	57%
Neither Agree nor Disagree	10	19%
Disagree	11	20%
Strongly Disagree	0	0%



Question 38: If applicable, I was satisfied with the overall quality of CIEE classes, i.e., courses that were attended solely by program participants.

Option	Selected (# of times)	Percentage
Strongly Agree	1	3%
Agree	4	10%
Neither Agree nor Disagree	34	87%
Disagree	0	0%
Strongly Disagree	0	0%

