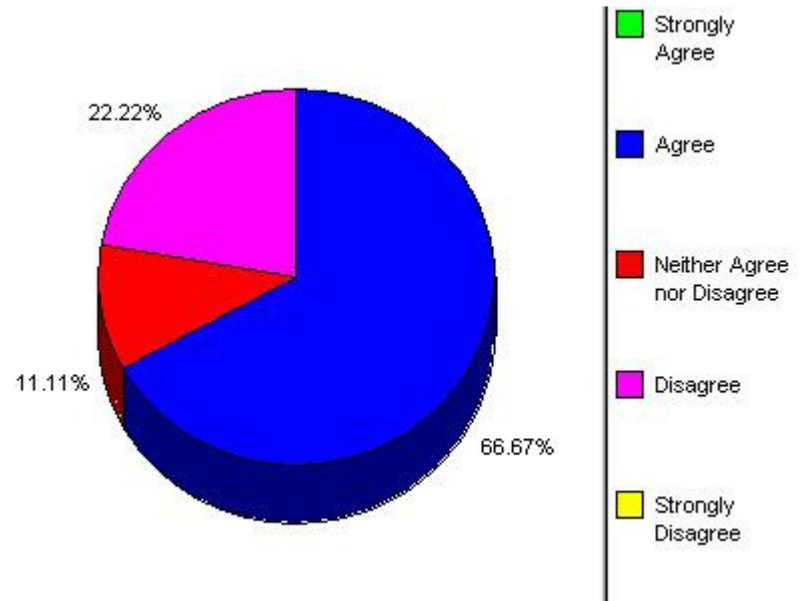


## Fall 2009 - Cape Town SL

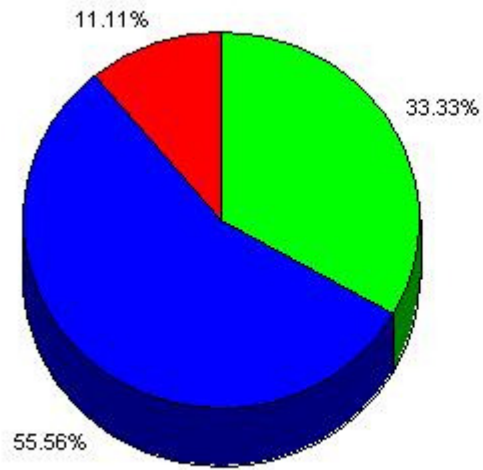
**Question 1:** The program information I received from CIEE before my departure was useful.

Option	Selected (# of times)	Percentage
Strongly Agree	0	0%
Agree	6	67%
Neither Agree nor Disagree	1	11%
Disagree	2	22%
Strongly Disagree	0	0%



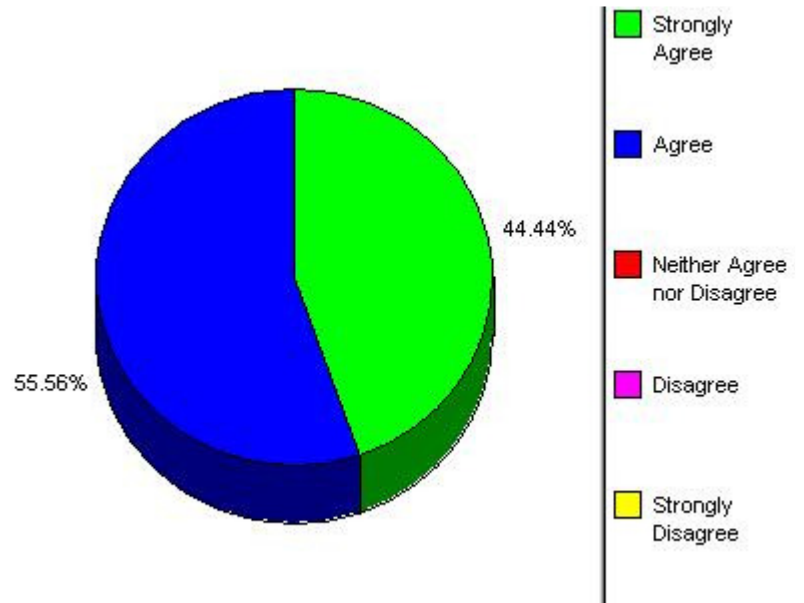
**Question 2:** The MYCIEE systems allowed me to access program information effectively.

Option	Selected (# of times)	Percentage
Strongly Agree	3	33%
Agree	5	56%
Neither Agree nor Disagree	1	11%
Disagree	0	0%
Strongly Disagree	0	0%



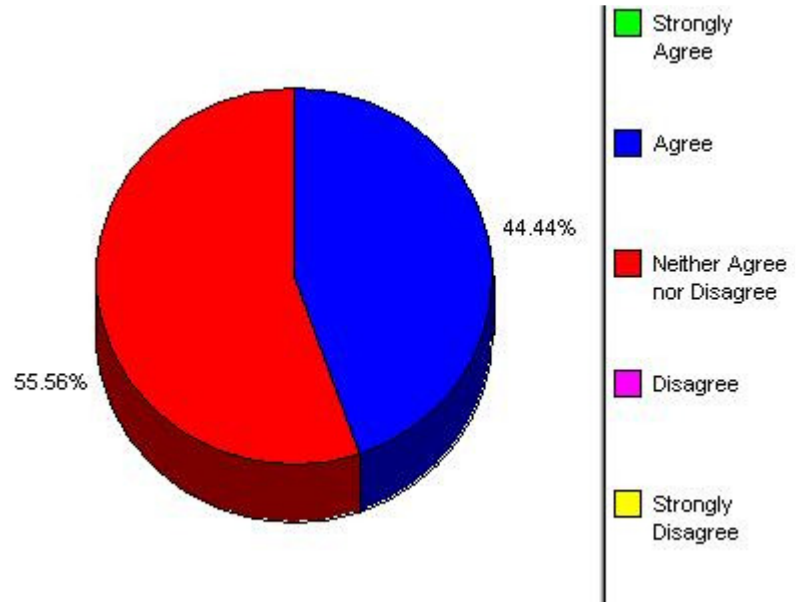
**Question 3:** I was satisfied with the quality of the responses made by e-mail or telephone by U.S. based staff members.

Option	Selected (# of times)	Percentage
Strongly Agree	4	44%
Agree	5	56%
Neither Agree nor Disagree	0	0%
Disagree	0	0%
Strongly Disagree	0	0%



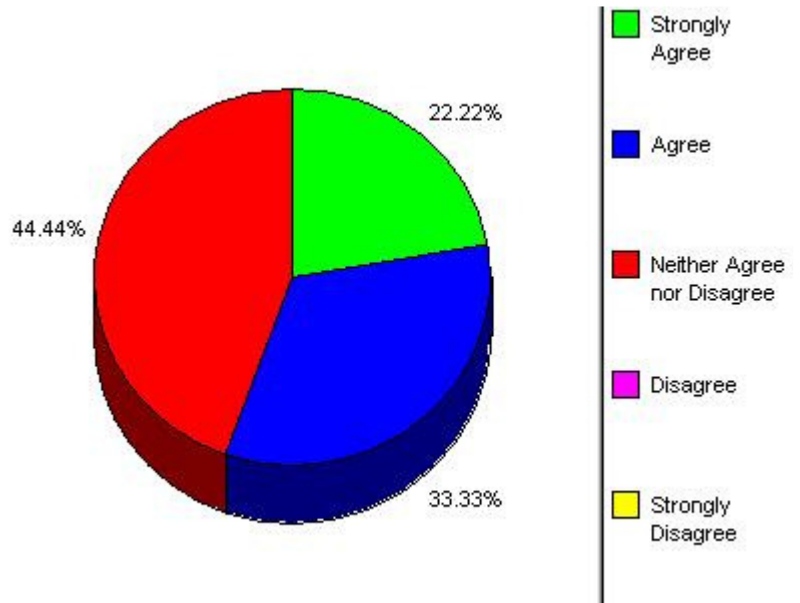
**Question 5:** The estimated additional financial costs provided by CIEE during the predeparture phase allowed me to budget appropriately.

Option	Selected (# of times)	Percentage
Strongly Agree	0	0%
Agree	4	44%
Neither Agree nor Disagree	5	56%
Disagree	0	0%
Strongly Disagree	0	0%



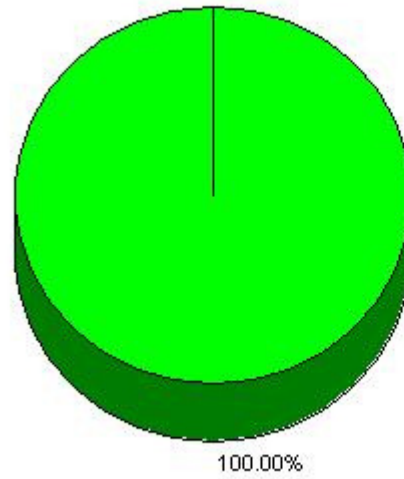
**Question 7:** The CIEE on-site orientation prepared me for my study abroad experience in the local environment.

Option	Selected (# of times)	Percentage
Strongly Agree	2	22%
Agree	3	33%
Neither Agree nor Disagree	4	44%
Disagree	0	0%
Strongly Disagree	0	0%



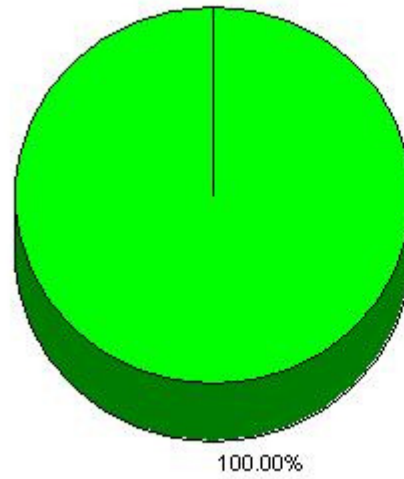
**Question 9:** CIEE-provided housing was satisfactory.

Option	Selected (# of times)	Percentage
Strongly Agree	9	100%
Agree	0	0%
Neither Agree nor Disagree	0	0%
Disagree	0	0%
Strongly Disagree	0	0%



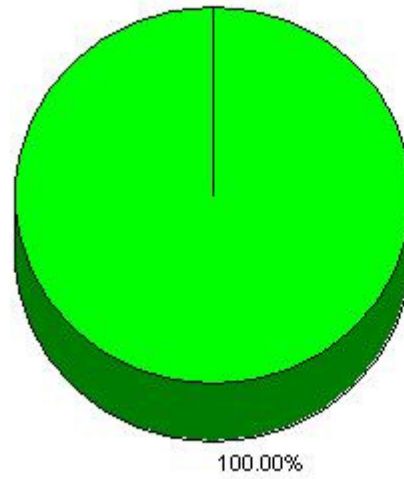
**Question 10:** I was satisfied with the quality of the CIEE-organized local cultural activities.

Option	Selected (# of times)	Percentage
Strongly Agree	9	100%
Agree	0	0%
Neither Agree nor Disagree	0	0%
Disagree	0	0%
Strongly Disagree	0	0%



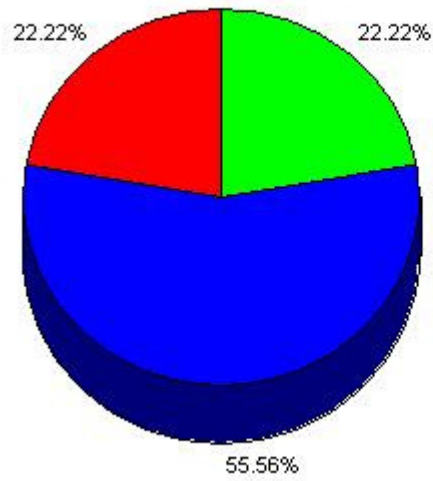
**Question 11:** I was satisfied with the quality of the CIEE-organized longer (overnight or weekend) excursions.

Option	Selected (# of times)	Percentage
Strongly Agree	9	100%
Agree	0	0%
Neither Agree nor Disagree	0	0%
Disagree	0	0%
Strongly Disagree	0	0%



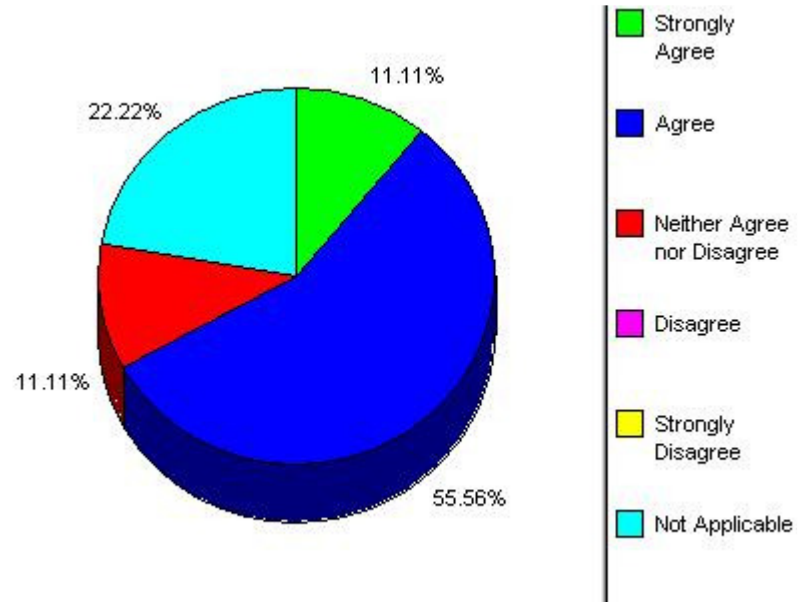
**Question 13:** The overall academic program was rewarding.

Option	Selected (# of times)	Percentage
Strongly Agree	2	22%
Agree	5	56%
Neither Agree nor Disagree	2	22%
Disagree	0	0%
Strongly Disagree	0	0%



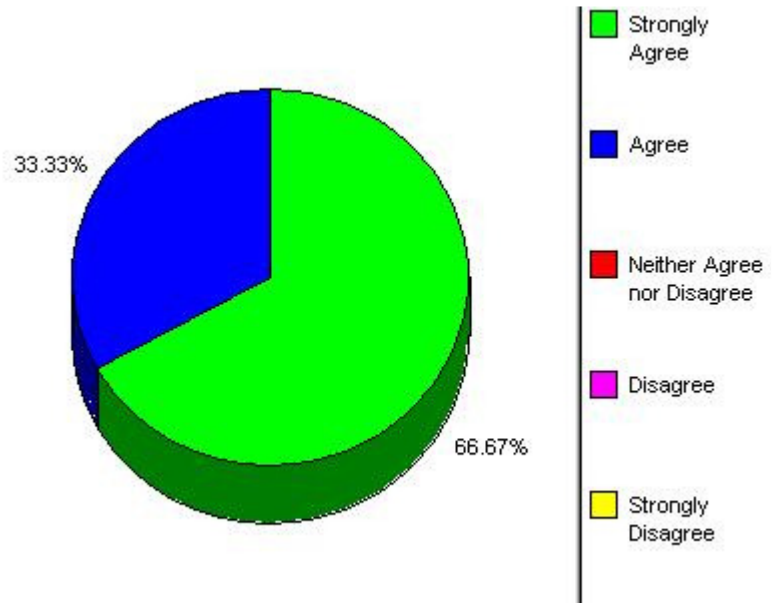
**Question 14:** If applicable, participation in the program allowed me to advance in my language education more comprehensively than I would have at my home school.

Option	Selected (# of times)	Percentage
Strongly Agree	1	11%
Agree	5	56%
Neither Agree nor Disagree	1	11%
Disagree	0	0%
Strongly Disagree	0	0%
Not Applicable	2	22%



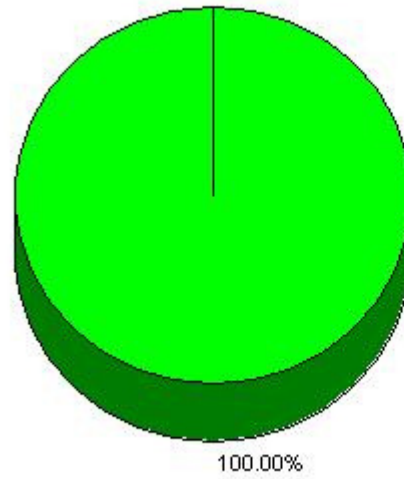
**Question 31:** The program met its goals, as presented above.

Option	Selected (# of times)	Percentage
Strongly Agree	6	67%
Agree	3	33%
Neither Agree nor Disagree	0	0%
Disagree	0	0%
Strongly Disagree	0	0%



**Question 35:** Overall, my evaluation of the program is positive.

Option	Selected (# of times)	Percentage
Strongly Agree	9	100%
Agree	0	0%
Neither Agree nor Disagree	0	0%
Disagree	0	0%
Strongly Disagree	0	0%



**Question 36:** I would recommend this program to a friend.

Option	Selected (# of times)	Percentage
Strongly Agree	9	100%
Agree	0	0%
Neither Agree nor disagree	0	0%
Disagree	0	0%
Strongly Disagree	0	0%

