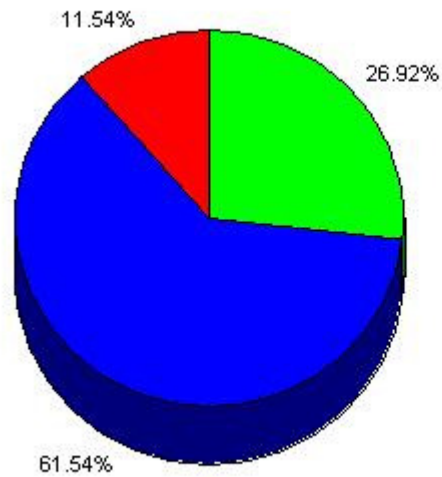


Fall 2009 - Brussels BCC

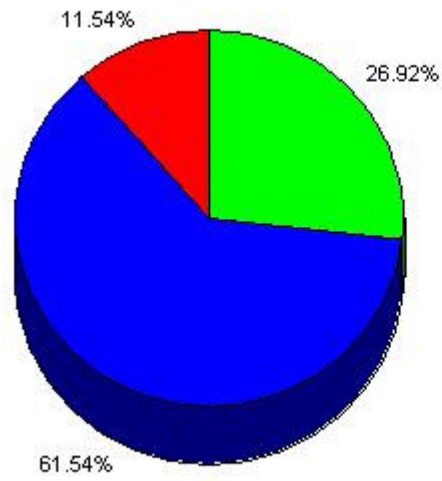
Question 1: The program information I received from CIEE before my departure was useful.

Option	Selected (# of times)	Percentage
Strongly Agree	7	27%
Agree	16	62%
Neither Agree nor Disagree	3	12%
Disagree	0	0%
Strongly Disagree	0	0%



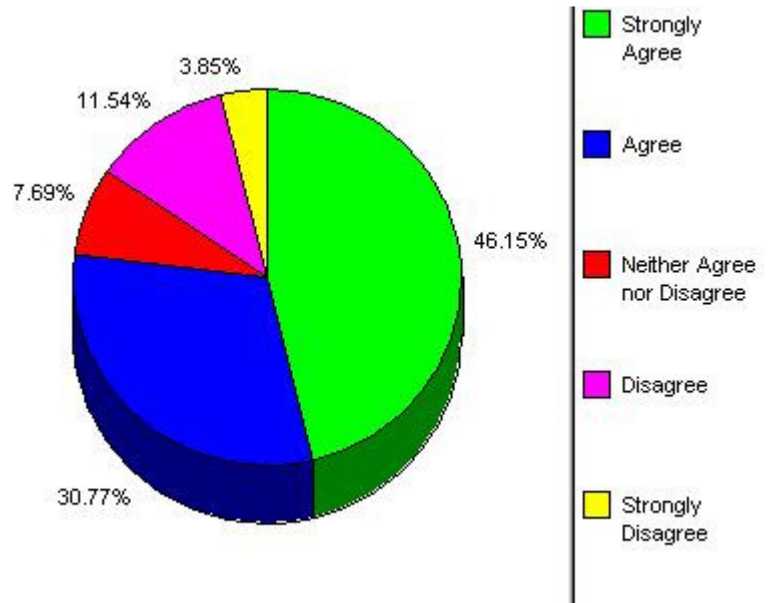
Question 2: The MYCIEE systems allowed me to access program information effectively.

Option	Selected (# of times)	Percentage
Strongly Agree	7	27%
Agree	16	62%
Neither Agree nor Disagree	3	12%
Disagree	0	0%
Strongly Disagree	0	0%



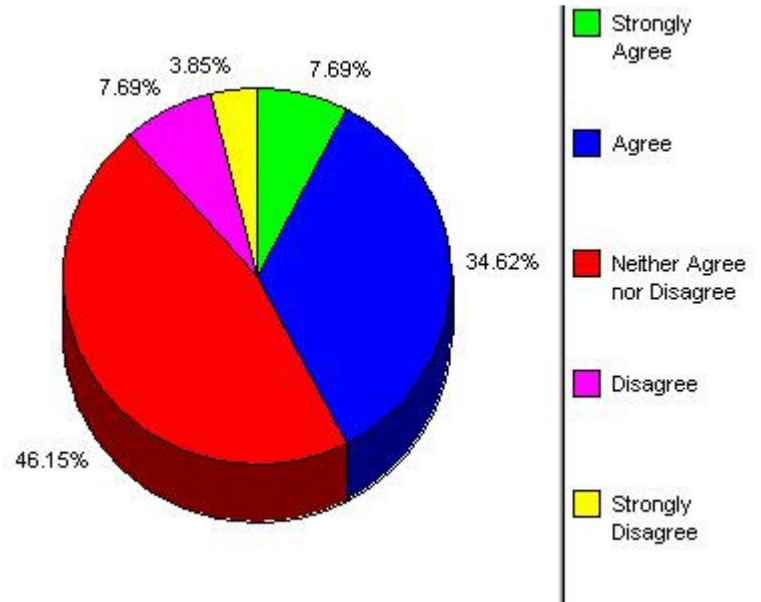
Question 3: I was satisfied with the quality of the responses made by e-mail or telephone by U.S. based staff members.

Option	Selected (# of times)	Percentage
Strongly Agree	12	46%
Agree	8	31%
Neither Agree nor Disagree	2	8%
Disagree	3	12%
Strongly Disagree	1	4%



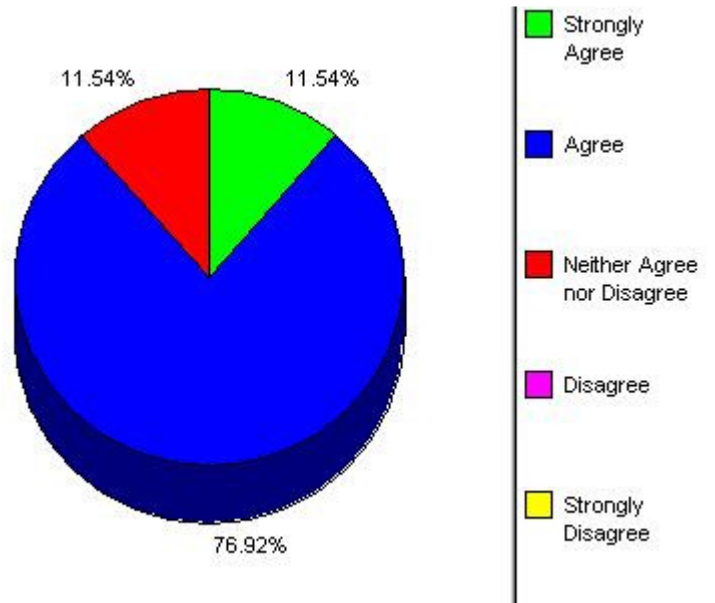
Question 5: The estimated additional financial costs provided by CIEE during the predeparture phase allowed me to budget appropriately.

Option	Selected (# of times)	Percentage
Strongly Agree	2	8%
Agree	9	35%
Neither Agree nor Disagree	12	46%
Disagree	2	8%
Strongly Disagree	1	4%



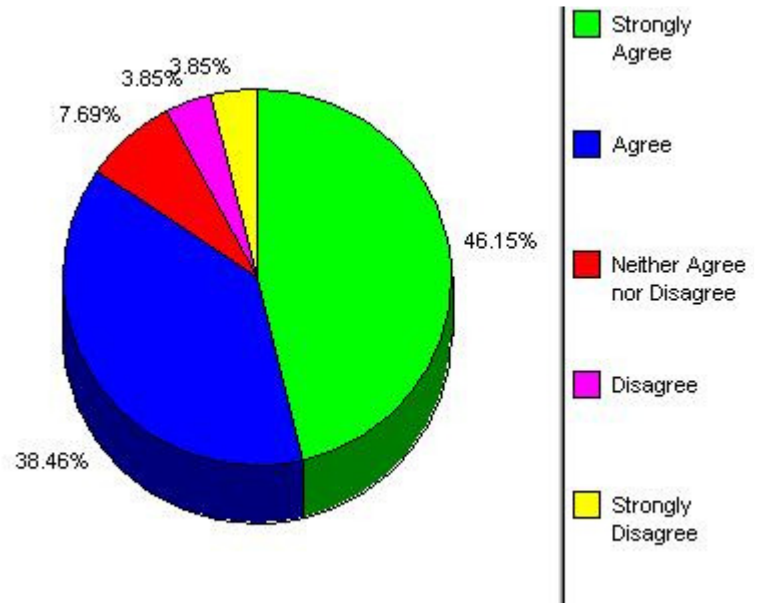
Question 7: The CIEE on-site orientation prepared me for my study abroad experience in the local environment.

Option	Selected (# of times)	Percentage
Strongly Agree	3	12%
Agree	20	77%
Neither Agree nor Disagree	3	12%
Disagree	0	0%
Strongly Disagree	0	0%



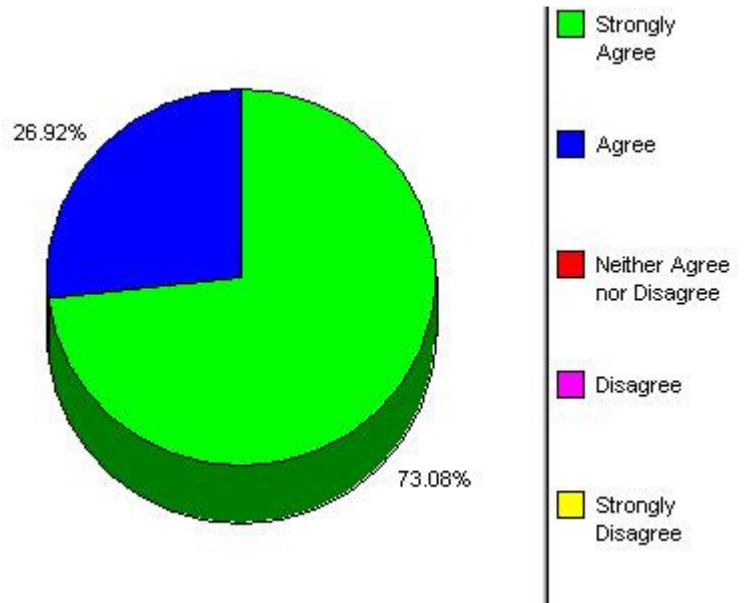
Question 9: CIEE-provided housing was satisfactory.

Option	Selected (# of times)	Percentage
Strongly Agree	12	46%
Agree	10	38%
Neither Agree nor Disagree	2	8%
Disagree	1	4%
Strongly Disagree	1	4%



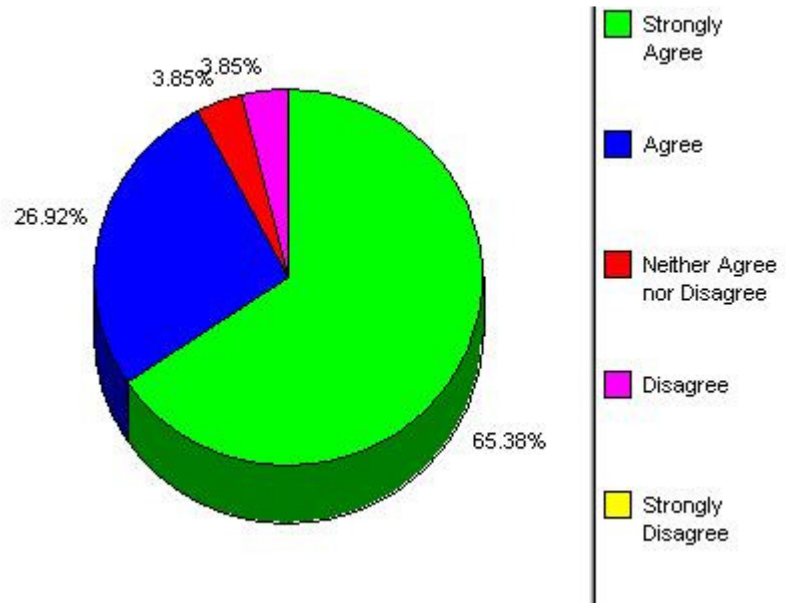
Question 10: I was satisfied with the quality of the CIEE-organized local cultural activities.

Option	Selected (# of times)	Percentage
Strongly Agree	19	73%
Agree	7	27%
Neither Agree nor Disagree	0	0%
Disagree	0	0%
Strongly Disagree	0	0%



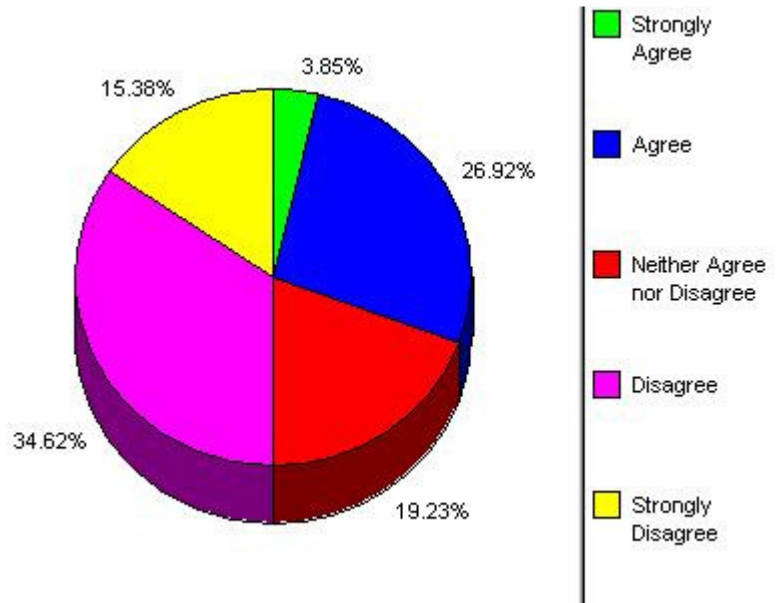
Question 11: I was satisfied with the quality of the CIEE-organized longer (overnight or weekend) excursions.

Option	Selected (# of times)	Percentage
Strongly Agree	17	65%
Agree	7	27%
Neither Agree nor Disagree	1	4%
Disagree	1	4%
Strongly Disagree	0	0%



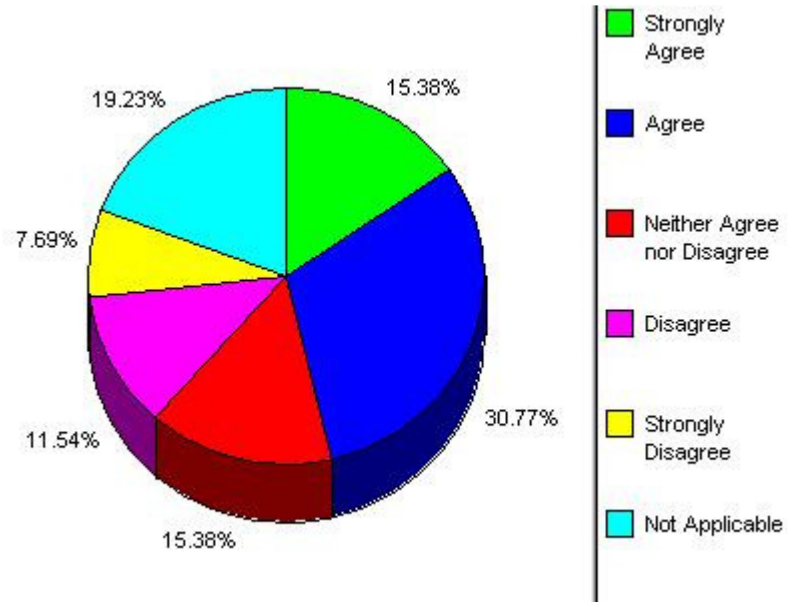
Question 13: The overall academic program was rewarding.

Option	Selected (# of times)	Percentage
Strongly Agree	1	4%
Agree	7	27%
Neither Agree nor Disagree	5	19%
Disagree	9	35%
Strongly Disagree	4	15%



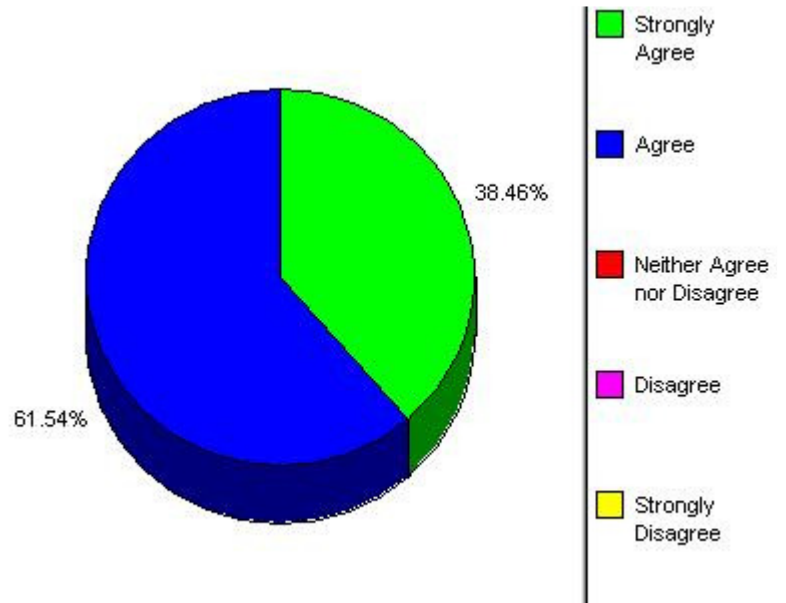
Question 14: If applicable, participation in the program allowed me to advance in my language education more comprehensively than I would have at my home school.

Option	Selected (# of times)	Percentage
Strongly Agree	4	15%
Agree	8	31%
Neither Agree nor Disagree	4	15%
Disagree	3	12%
Strongly Disagree	2	8%
Not Applicable	5	19%



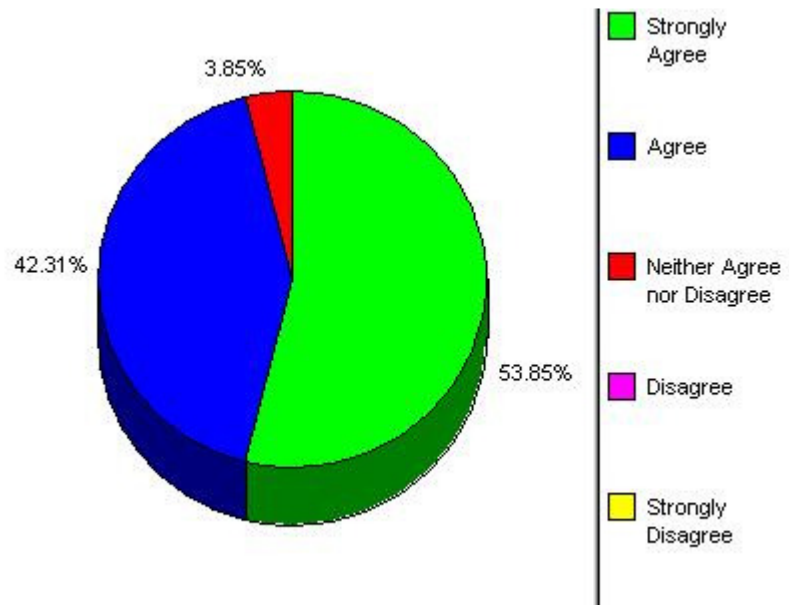
Question 31: The program met its goals, as presented above.

Option	Selected (# of times)	Percentage
Strongly Agree	10	38%
Agree	16	62%
Neither Agree nor Disagree	0	0%
Disagree	0	0%
Strongly Disagree	0	0%



Question 35: Overall, my evaluation of the program is positive.

Option	Selected (# of times)	Percentage
Strongly Agree	14	54%
Agree	11	42%
Neither Agree nor Disagree	1	4%
Disagree	0	0%
Strongly Disagree	0	0%



Question 36: I would recommend this program to a friend.

Option	Selected (# of times)	Percentage
Strongly Agree	11	42%
Agree	8	31%
Neither Agree nor disagree	6	23%
Disagree	0	0%
Strongly Disagree	1	4%

